



9 Sundowner Street Regents Park, QLD

3

2

1

## Charming Family Home with Beautiful Gardens and Immaculate Condition

Set on a prime 727m2 allotment, this home makes an incredible first impression with its attractive facade and beautiful gardens. Inside, every detail has been meticulously maintained, ensuring a move-in ready experience.

From the moment you walk through the front door, the sunlight streaming through the windows casts a warm glow through the living space, creating an area that feels fresh, inviting and ready for its next chapter.

Designed for easy living, the open-plan layout features a generous lounge area and a formal dining space that flows effortlessly together, perfect for enjoying cosy family time or entertaining guests.

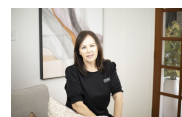
Returning inside, the well-located bedrooms allow separation for adults and growing children. As with all good designs, the main bedroom is completed with ensuite and walk-in robe. Two additional bedrooms, one with triple built-ins, are serviced by a pristine family bat...

**Price:** \$825,000  
**Council Rates:** \$846.16 p/q



**Leanne & Bridgette**

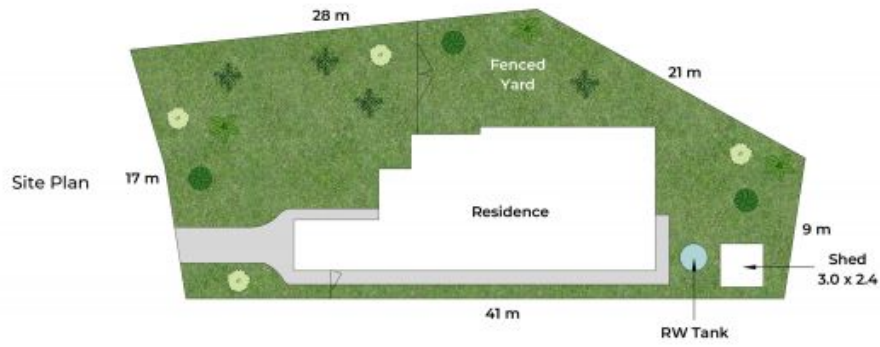
0430 445 750



**Leanne Gunn**

0413 817 092





Approx. Floor Area | Internal 144 m<sup>2</sup> | External 38 m<sup>2</sup> | Total 182 m<sup>2</sup> | Lot 727 m<sup>2</sup>

Unless otherwise stated, all dimensions are in metres. Star arrows indicate the upward direction. This plan and information contained within is for illustrative purposes only and not guaranteed to be exact. Interested parties should make their own enquiries.

