

4/20 Eurobin Avenue Manly, NSW

2

1

### Renovated Character Apartment ? Metres to Beach

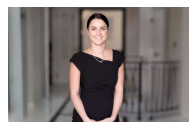
Art deco two-bedroom apartment in boutique block of four, offers easy living and is North facing top floor only minutes from the beach, this apartment enjoys an abundance of natural light. Spread over 80 square metres with high ceilings, this apartment feels more like a semi.

Features include:

- Two large bedrooms, with timber flooring
- Spacious living room with adjoining sunroom
- A large eat in kitchen with internal laundry facilities
- Bathroom and separate toilet.
- Located at the Queenscliff end of Manly with Harris Farm, Kierle Park and Manly beach just around the corner.
- Less than two kilometres away from Manly Village Public School

**Inspect:** Thursday, 17th October 2024 1:20 - 1:40

**Price:** \$980 per week  
**Bond:** \$4,400  
**Available Date:** 18/10/2024



**Natasha Amos**  
0415 755 587



**Stephanie Ryan**  
0451 307 760



Unit 4

