



54/630 Pacific Highway Killara, NSW

3

1

1

## House-like family apartment with blissful off-highway setting

This classic full brick family apartment will leave a lasting impression with its single level layout sprawling across 128sqm approx. in a rear position set well away from the highway. House-like interiors show large windows for natural light and restful treetop and garden views. Renovated throughout with a spacious multi-zone living and dining, on-trend modern flooring and plantation shutters. Three extra-large bedrooms.

The stone kitchen and gorgeous bathroom blend contemporary functionality with lashings of high-quality styling.

- Outstanding family starter or couples' nest where you can really spread out
- Off-highway with leafy garden and district views drawn through large windows
- Full brick and slab 1950s building, lovely art deco motifs to communal areas
- Easy access with only one full flight up from the street entry level
- Vast multi-zone living and dining also has plenty of space for a study hub
- Modern engineered stone kitchen practical u-shape wrapped in storage
- Miele induction cooktop, electric oven, dishwasher, and an integrated laundry

**Inspect:**

Saturday, 19th October 2024 9:30 - 10:00

**Price:**

For Sale - Contact Agent



**Matt Payne**

0435 825 242

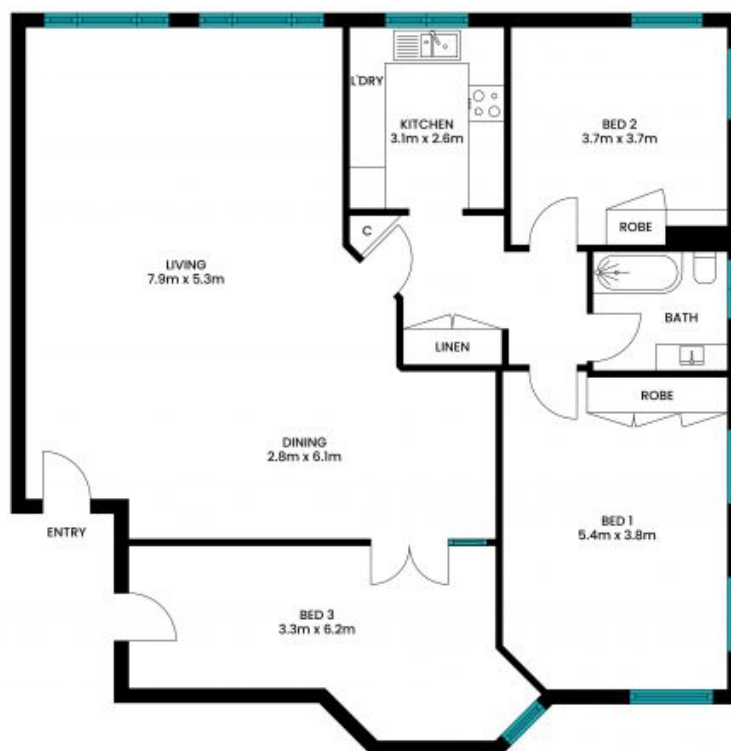
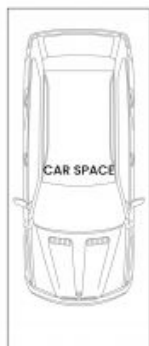


**Andrew Braid**

0404 979 597

54/630 Pacific Highway  
Killara

STONE



The site plan and floor plan are not to scale; measurements are indicative and in metres. Bushes and trees are placed for illustration purposes. Plans should not be relied on. Interested parties should make and rely on their own enquiries. All other information provided has been collected from reliable sources but cannot be guaranteed for accuracy.