



12/2-14 Pacific Highway Roseville, NSW

1 1 1

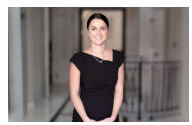
Charming one bed, one bath retreat in prime location

Modern sophistication and lifestyle ease. Impressive proportions and quintessential luxury accompany the compelling appeal of this timelessly contemporary residence. Located within a modern complex with vehicle access off Corona Avenue, only moments to Roseville village and Railway station.

- Features include:
- Spacious combined lounge and dining area
 - Open plan kitchen with stone surfaces and quality appliances
 - Private balcony bathed in natural light
 - Generous bedroom with mirrored built-in wardrobe
 - Modern bathroom, separate internal laundry
 - Reverse air conditioning throughout
 - Single car space with security access
 - Less than four kilometres from Lindfield Learning Village

Disclaimer: Stone Real Estate believes that this information is correct but does not warrant or guarantee the accuracy of the information. Certain information has been obtained from external sources and has not been independently verified. You should make your own enqui...

Price: Deposit Taken
Available Date: 18/10/2024



Natasha Amos
 0415 755 587



Stephanie Ryan
 0451 307 760



FIRST FLOOR



6/2-14 PACIFIC HIGHWAY ROSEVILLE
*Disclaimer: This information is for general information only and does not constitute an offer of any financial product. Please refer to the Product Disclosure Statement for more information. This information is provided for general information only and does not constitute an offer of any financial product. Please refer to the Product Disclosure Statement for more information. *Disclaimer: This information is for general information only and does not constitute an offer of any financial product. Please refer to the Product Disclosure Statement for more information.