

8 Adina Street Telopea, NSW

5 4 2

### Exquisite family residence of modern elegance

Unrivalled in large-scale luxury and impeccable quality, this newly finished family entertainer is a rare masterpiece, taking style and sophistication to new heights. The ultimate expression of elegant living, it showcases soaring ceilings, high-end finishes, and statement lighting, all set in a peaceful enclave, zoned for Carlingford West Public and steps to parks and transport.

- Ideal north-to-rear aspect, bathing the entertaining area with natural light
- Expansive all-weather alfresco patio with a well-equipped outdoor kitchen
- Majestic double-height entry adorned with a striking floating staircase
- Incredible 6m-high ceiling in living, with chandelier, gas fire, feature wall
- Opulent, open-plan kitchen with gas cooktop, waterfall island breakfast bar
- Generous bedrooms, including one on the ground floor, three with built-ins
- Decadent master and secondary suites, both with WIRs and indulgent ensuites
- Two opulent bathrooms with walk-in rain showers, and freestanding bath in one

**Inspect:** Saturday, 19th October 2024 2:00 - 2:30  
**Auction:** 19/10/2024 02:30 pm

---

**Price:** Auction



**Jeff Jianfu Luo**  
0425 286 668



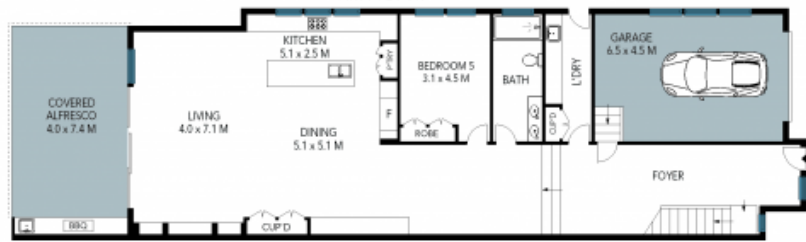
**Wenjie Luo**  
0433 971 007



SITE PLAN



FIRST FLOOR



GROUND FLOOR



The site plan and floor plan are not to scale; measurements are indicative and in metres. Bushes and trees are placed for illustration purposes. Plans should not be relied on. Interested parties should make and rely on their own enquiries. All other information provided has been collected from reliable sources but cannot be guaranteed for accuracy.