

201B/5 Telegraph Road Pymble, NSW

3 3 3

Easy care luxury

A prized find positioned back from the road within admired 'Adeline', this lavish penthouse apartment is dressed to impress. Wrapping around the north-east corner of the block with windows and decks on three sides, its masterfully crafted with house like proportions, high end finishes and spectacular views. Enjoy excellence steps to the bus, station, shops and PLC.

- Exclusive apartment, only one on its floor, intercom, level lift access
- Quiet, light filled interiors, high ceilings and engineered oak flooring
- Sweeping living and dining wrapped in galleries of glass, ducted a/c
- Every room opens out to the vast wraparound decks, outdoor kitchen
- Built-in barbecue, deluxe stone and gas kitchen with fine Miele appliances
- Integrated fridge/freezer, enormous family bathroom, freestanding bath
- Three spacious bedrooms with walls of robes open directly to the decks
- Master retreat with an ensuite, laundry, side by side DLUG with storage

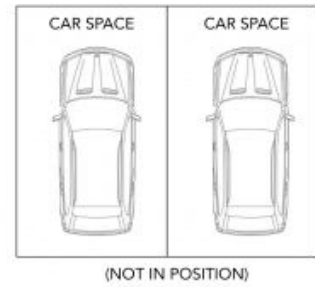
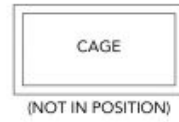
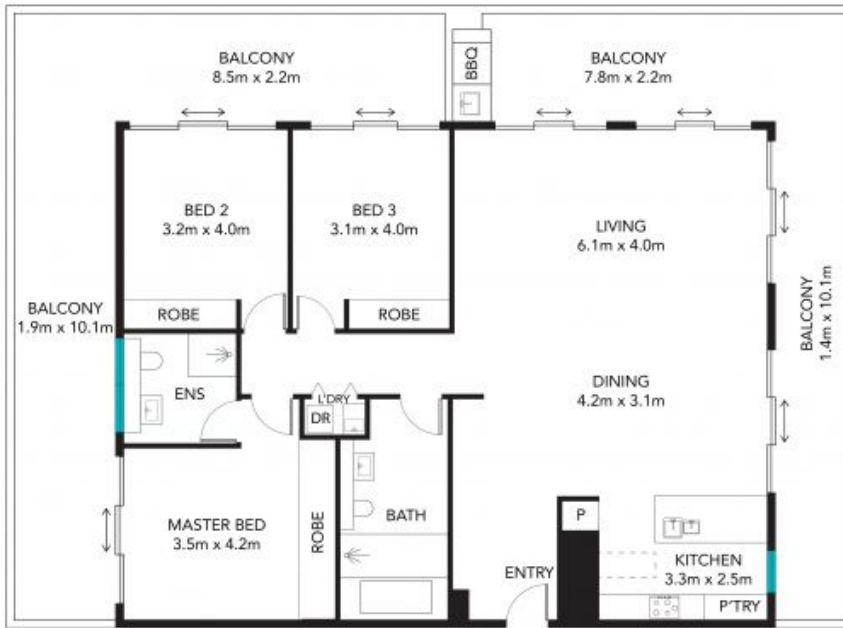
Price: Contact Agent



Joey Hoover
0424 487 439



Susan Astridge
0418 104 540



Internal area : 125m²
 External area : 68m²
 Total area(approx) : 193m²

The site plan and floor plan are not to scale; measurements are indicative and in meters. Bushes and trees are placed for illustration purposes. Plans should not be relied on. Interested parties should make and rely on their own enquire. All other information provided has been collected from reliable sources but cannot be guaranteed for accuracy.