



7/2 Gerard Street Cremorne, NSW



Ultra Convenient Location & Northerly Aspect

Step into luxury living with this exquisite second level apartment located at the rear of the complex. Nestled in a prime corner spot, its outdoor terrace offers panoramic northerly district views, flooding the space with natural light and an enchanting ambiance. Impeccably renovated with a fresh white palette, this three-bedroom abode boasts optimal separation between living and sleeping quarters.

Featuring:

- * Expansive windows capturing sweeping northerly views
- * L-shaped living and dining area opening onto a covered balcony
- * Sleek stone kitchen with gas stainless steel appliances
- * Master bedroom with built-in robe, alongside a versatile third bedroom or home office...
- * Stylish bathroom, separate WC, and internal laundry...
- * Security entrance, lift access, and secure undercover parking...

Price: \$900 pw
Available Date: 25/10/2024



Louise Lipovac

0449 234 669



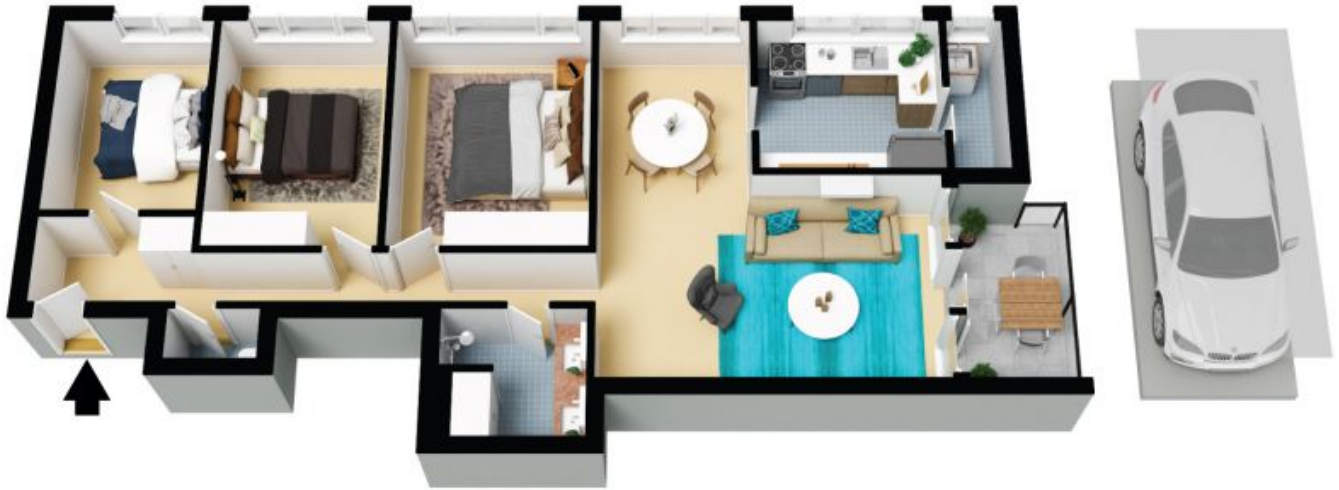
UNDERCOVERED
SECURE
PARKING
5.5 x 2.4 M

(NOT IN POSITION)



The floor plan is not to scale, measurements are indicative and in metres. Exterior elements are not in position. Plans should not be relied on. Interested parties should make and rely on their own enquiries. All other information provided has been collected from reliable sources but cannot be guaranteed for accuracy.

7/2-8 Gerard Street
Cremorne



The floor plan is not to scale; measurements are indicative and in metres. All features included in this 3D plan are for inspiration purposes only. This is not an exact replica of the property or the position of exterior elements. Plans should not be relied on. Interested parties should make and rely on their own enquiries.