



6 Scribbly Gum Close San Remo, NSW

6

2

Spacious 6 Bedroom Home In Peaceful, Convenient Location

Welcome to 6 Scribbly Gum Close, San Remo, this is a rare opportunity to secure a 6-bedroom home, wonderfully positioned just 850m (approx) from the lake's edge. This treasured family home impresses with an effortless and superbly spacious layout. Perfectly suited to extended or large families with multiple living areas and large covered outdoor entertainment space. You'll love the generous 633sqm fully fenced block, within a tranquil, private position backing onto bush reserve. Arrange your inspection today, properties such as these rarely come along.

- Quality brick and tile level home with a whopping 6 bedrooms, all fitted with built-in robes
- Spacious main bedroom with feature bay windows, walk in robe and ensuite bathroom
- Huge, cleverly thought-out floor plan, with multiple living spaces leading onto a large entertainment area
- Modern timber laminate flooring throughout

Inspect: Saturday, 19th October 2024 10:00 - 10:20

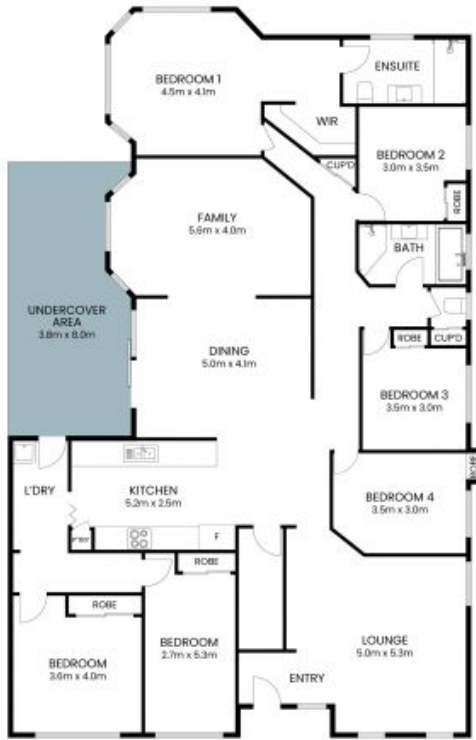
Price: Price Guide \$879,000



Louise Barwick

0450 560 478

6 Scribbly Gum Close
San Remo



Ground Floor



Site Plan



The site plan and floor plan are not to scale; measurements are indicative and in metres. Bushes and trees are placed for illustration purposes. Plans should not be relied on. Interested parties should make and rely on their own enquiries. All other information provided has been collected from reliable sources but cannot be guaranteed for accuracy.