



18/30 Bon Scott Crescent Moncrieff, ACT

3

2

2

Turn-key ready!

Embrace contemporary living in this sleek townhouse, offering a modern haven of comfort and style in the peaceful family-friendly location in Moncrieff.

Step inside to discover the living, dining and kitchen area that is meticulously designed to maximise both functionality and aesthetic appeal. With its open flow and high-quality design, this inviting space sets the stage for relaxed gatherings and everyday living. Upstairs you will find all three bedrooms flooded with natural light with both ensuite and the main bathroom enjoying high quality finishes. Outside, the yard is thoughtfully designed for low-maintenance upkeep, allowing for more time to enjoy the surroundings.

All within moments to a host of local amenities including Moncrieff Recreational Park, Amaroo Shopping Centre, Casey Market Town, Taylor and Amaroo Schools and a short drive to the Gungahlin Town Centre.

Features Overview:

- Multi-level floorplan
- Located a moments walk to Moncrieff Recreational Park, Taqwa School and Margaret Hendry ...

Price:

\$625,000



Jess Doolan

0477 775 773

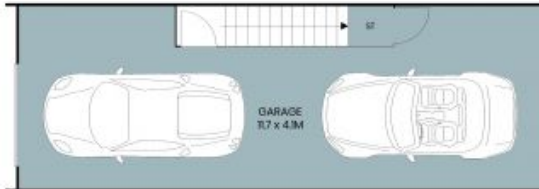


Alex Ford

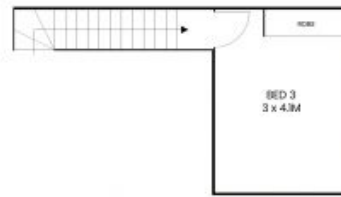
0487 382 549



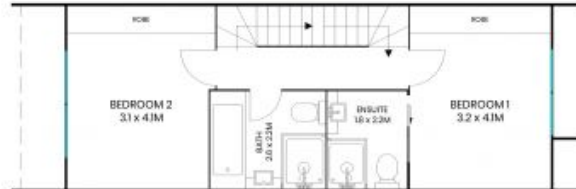
First Floor



Ground Floor



Third Floor



Second Floor



Site Plan



The site plan and floor plan are not to scale; measurements are indicative and in metres. Bushes and trees are placed for illustration purposes. Plans should not be relied on. Interested parties should make and rely on their own enquiries. All other information provided has been collected from reliable sources but cannot be guaranteed for accuracy.



First Floor



Third Floor



Ground Floor



Second Floor



The floor plan is not to scale; measurements are indicative and in metres. All features included in this 3D plan are for inspiration purposes only. This is not an exact replica of the property or the position of exterior elements. Plans should not be relied on. Interested parties should make and rely on their own enquiries.