



703/37 Bayswater Road Potts Point, NSW 2  2  2

### Luxury Penthouse Apartment with Stunning Rushcutters Bay Views.

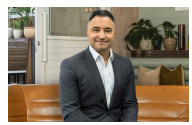
Welcome to your dream home at 'The Hensley', a boutique building nestled in the heart of Potts Point, offering a lifestyle of sophistication and convenience. Architecturally designed by Woods Bagot, this spacious apartment boasts breathtaking eastern views of Rushcutters Bay Park and the serene waters beyond.

Impeccably designed, the apartment features high-quality finishes and premium fixtures throughout. Perfectly situated just 2km from the bustling City Centre, you'll enjoy the tranquility of this leafy street while being close to all the action.

- \*Premium kitchen is equipped with chic Smeg appliances
- \*Relax in the master bedroom complete with built-in robes and a sleek ensuite.
- \*Secure double basement parking
- \*Ducted air conditioning, video entry, and lift
- \*Communal rooftop terrace with spectacular views.

Potts Point is renowned for its vibrant atmosphere, with trendy wine bars, waterfront parks, and an array of cafes and restaurants just a stroll away. Tucked between Woolloomooloo,...

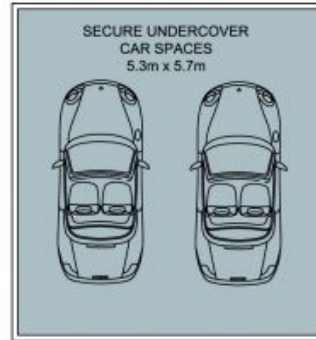
**Price:** Price Guide \$2,300,000  
**Council Rates:** \$352.00 p/q  
**Water Rates:** \$179.00 p/q  
**Strata Rates:** \$3,275.00 p/q



**Ari Ozbenian**  
 0419 337 318



STORAGE  
CAGE  
2.0m x 0.9m



The floor plan is not to scale, measurements are indicative and in meters. Exterior elements are not in position. Plan should not be relied on. Interested parties should make and rely on their own enquiries. All other information provided has been reflected from reliable sources but cannot be guaranteed for accuracy.

703/37 Bayswater Road, Potts Point

