



2 Burgess Street Beverley Park, NSW



Immaculate Two-Storey Oasis in Prime Beverley Park Location

- Four generously sized bedrooms, each with built-in wardrobes, plus a study/home office for added flexibility. The master suite features a walk-in wardrobe and an ensuite
- Bright and open-plan living, dining, and kitchen areas with a seamless flow to outdoor spaces, ideal for family gatherings or entertaining
- Spacious backyard with a low-maintenance garden, offering multiple zones for relaxation and entertaining, including a covered alfresco area
- Gourmet kitchen with premium granite benchtops, quality stainless steel appliances, and ample storage, perfect for home chefs and large families
- Potential to customise and add your own personal touches to make this home uniquely yours while enjoying its immediate comfort
- Double garage with internal access, along with additional off-street parking, ensuring ample space for vehicles

Inspect: Saturday, 21st September 2024 10:00 - 10:30
Wednesday, 25th September 2024 10:00 - 10:30

Auction: 15/10/2024 05:30 pm

Price: AUCTION | Ray Fadel



Ray Fadel

0413 177 739

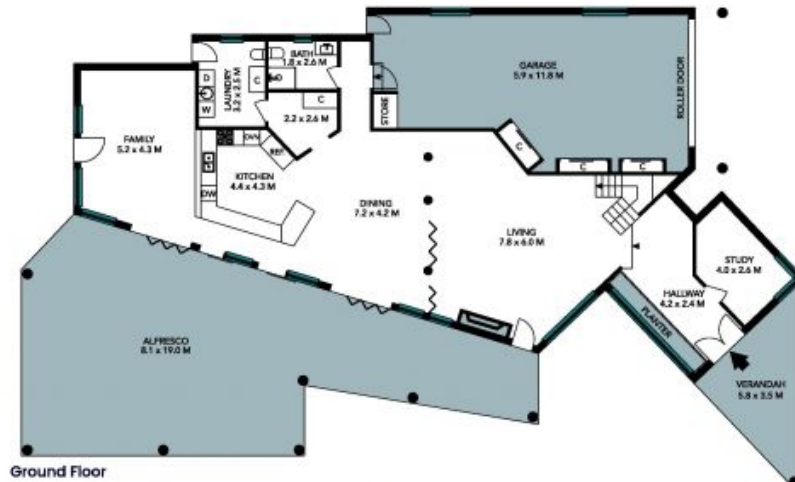
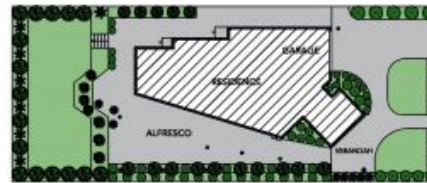


Steven Azzi

0410 333 112

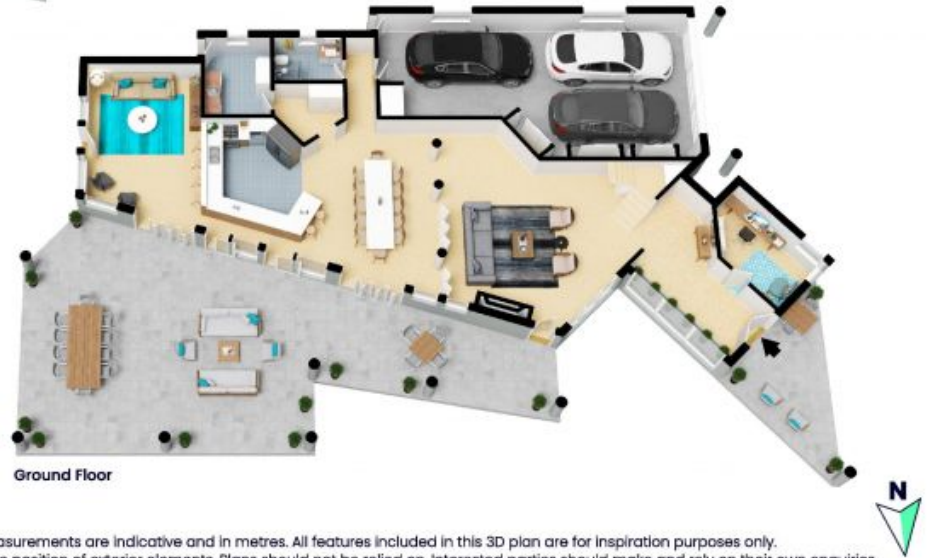
2 Burgess Street
Beverley Park

STONE



The site plan and floor plan are not to scale; measurements are indicative and in metres. Bushes and trees are placed for illustration purposes. Plans should not be relied on. Interested parties should make and rely on their own enquiries. All other information provided has been collected from reliable sources but cannot be guaranteed for accuracy.

2 Burgess Street
Beverley Park



The floor plan is not to scale; measurements are indicative and in metres. All features included in this 3D plan are for inspiration purposes only. This is not an exact replica of the property or the position of exterior elements. Plans should not be relied on. Interested parties should make and rely on their own enquiries.