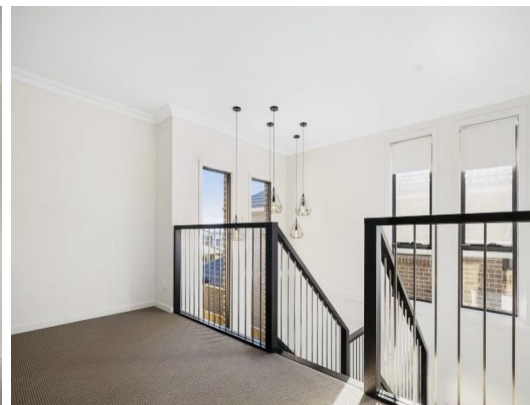


STONE



24 Wangolove Street Schofields, NSW



Elegant East Facing Luxurious Home!!

24 Wangolove Street, Tallawong NSW-2762

Harit Bimbhat from Stone Real Estate proudly presents this stunning large east-facing double-storey family home, perfectly situated in a highly desirable location just minutes from both Schofields Station and Tallawong Metro Station, as well as local shops and schools. With four spacious bedrooms, open-plan living, three full bathrooms, a double garage and large front and backyard, the property is designed for the modern family.

Key Features:

- 4 Generous Bedrooms: All with built-in robes and abundant natural light
- Big Land of 482sqm: big front and backyard
- Master Suite: Private ensuite and walk-in wardrobe
- Spacious Main Bathroom: Modern and stylish
- LED downlights and designer kitchen lighting
- Natural Wooden Staircase

Inspect:

Saturday, 21st September 2024 11:30 - 12:00

Price: \$960 pw

Available Date: 05/10/2024



Harit Bimbhat

0415 580 950

