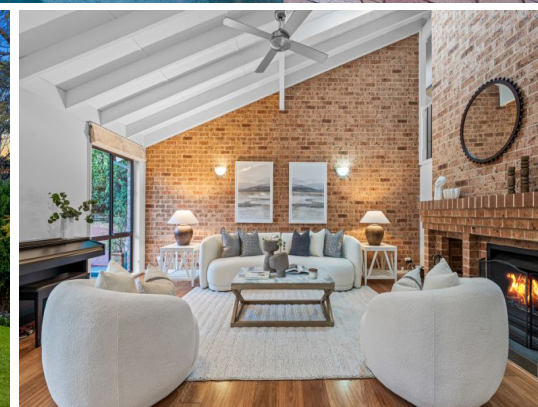


STONE



6 Patricia Place Cherrybrook, NSW

5

3

2

An unforgettable vision and tranquil sanctuary

Perched high on a corner overlooking Berowra Valley Regional Park, this unique masterpiece offers bush views from every room and a host of lifestyle advantages. A breathtaking marriage of creativity and craftsmanship, featuring lofty, vaulted ceilings and a double fireplace, it offers an exceptionally private, spacious, split-level layout designed for generational comfort.

- Resting on a generous 952.1sqm parcel, exuding a peaceful, resort-like presence
- Beautifully presented with blackbutt timber flooring, carpet, fresh paint
- Sumptuous lounge room and teenagers' retreat with side entry and large patio
- Modern kitchen featuring a butler's pantry, breakfast bar, and gas cooking
- Expansive semi-covered deck extending to a stunning pool and sitting area
- Divinely landscaped backyard with a "secret garden" frequented by birdlife
- Large living/dining room plus flexible study/home office with separate balcony
- Versatile bed and neighbouring bathroom on a lower level, ideal for guests

Inspect:

Thursday, 17th October 2024 5:00 - 5:30
Saturday, 19th October 2024 11:00 - 11:30

Price: For Sale \$2,500,000

Council Rates: \$659.10 p/q

Water Rates: \$172.79 p/q



Graham Black

0400 381 217



Viviane Mylott

0438 983 615

6 Patricia Place, Cherrybrook

5 3 2 317m² 952.1m²



THIS IS AN ARTIST'S IMPRESSION - ALL DIMENSIONS, LAYOUTS AND TREES ARE APPROXIMATE
ALL INTERESTED PARTIES SHOULD MAKE AND RELY ON THEIR OWN ENQUIRIES

