



506/22 Langston Place Epping, NSW

2 2 1

Sophisticated apartment opposite Epping station in sought after school catchments

Taking luxurious living to stunning new heights, this exceptional fifth floor apartment above Epping's thriving hub showcases breathtaking views with floor-to-ceiling windows and modern interiors fusing warmth and stylish design. Only two years old, this ultra-convenient residence delivers all the hallmarks of easy living and exceptional quality that's signature of 'The Langston'.

- Corner apartment with views to Macquarie Park and the Sydney Harbour Bridge
- Spacious, carefully considered open-plan floorplan with ample natural light
- Generously sized living and dining domain with seamless flow to the balcony
- Stylish gas kitchen with waterfall-edge island and semi-integrated dishwasher
- Two bedrooms with built-ins; master has indulgent ensuite with large shower
- Elegant main bathroom with frameless glass shower and floor-to-ceiling tiles
- Car space, storage cage, Euro-style laundry, ducted a/c, and video intercom
- Suite of owners' amenities include pool, gym, sky lounge/dining, gardens, co-working space

Inspect: Saturday, 21st September 2024 1:00 - 1:30
Wednesday, 25th September 2024 1:00 - 1:30

Price: Contact Agent
Council Rates: \$325.80 p/q
Water Rates: \$172.79 p/q
Strata Rates: \$1,522.15 p/q



Douglas Kim

0451 509 211

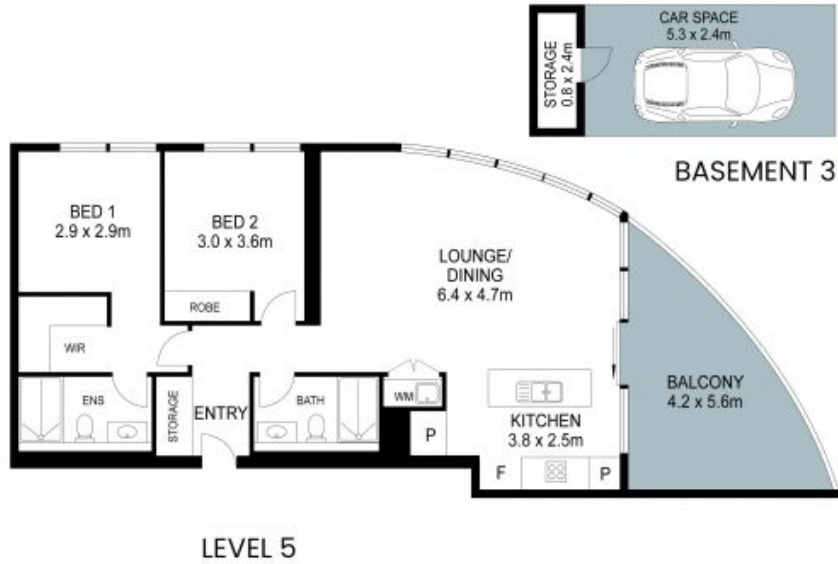


Jessica Zhou

0412 733 135

506/22 Langston Place, Epping

2 2 1



THIS IS AN ARTIST'S IMPRESSION - ALL DIMENSIONS, LAYOUTS AND TREES ARE APPROXIMATE
ALL INTERESTED PARTIES SHOULD MAKE AND RELY ON THEIR OWN ENQUIRIES

