



8/24 May Street Eastwood, NSW

2  1  1 

## Boutique top floor unit in the heart of Eastwood

Tucked to the rear of its complex with Eastwood station, shopping and popular dining precinct just metres around the corner, this modern two-bedroom apartment ensures effortless commuting and immediate lifestyle enjoyment in an ultra-desirable setting. It crowns the top floor of the building with high district views from its sunny open layout, in a thriving location where everything is at your fingertips.

- Neutrally schemed, bright and breezy open plan living/dining full of sunlight
- Warm engineered timber floors providing ideal low maintenance ease throughout
- Private north-west facing balcony at rear delivering relaxed elevated aspect
- Enhanced kitchen featuring new granite benchtops, quality oven and electric cooktop
- Generously equipped with full internal laundry and sizeable linen storage robe
- Well-presented bathroom with separate bath and shower, built-ins to main bed
- Neat and tidy boutique complex of solid double brick, single covered car space
- Footsteps to shops, transport and eateries, zoned for Eastwood Public School (approx 950 m)

Disclaimer: All information contained herewith, including but not limited to the general property description, price and the address, is provided to Stone Beecroft/Castle Hill /Epp...

**Price:** \$500 per week

**Available Date:** 14/11/2024



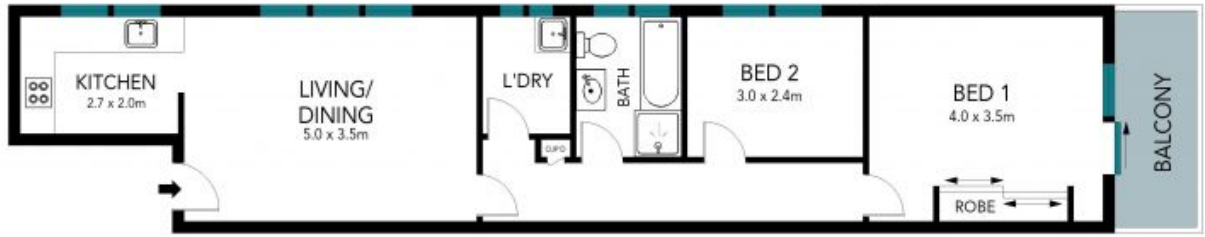
**Ashleigh Gray**

02 8893 2222

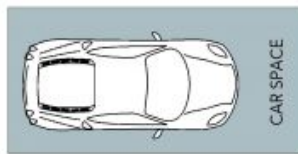


**Kevin Van**

02 8866 1500



TOP FLOOR



GROUND FLOOR

The floor plan is not to scale; measurements are indicative and in metres. Exterior elements are not in position. Plans should not be relied on. Interested parties should make and rely on their own enquiries.



8/24 May Street, Eastwood

