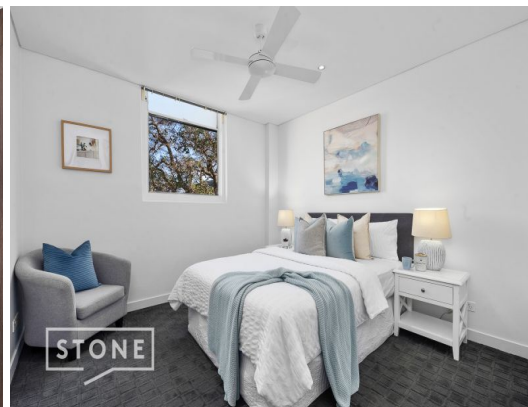


STONE

STONE



STONE



STONE



STONE

10/153 Bridge Road Glebe, NSW



## Contemporary terrace offering the ultimate inner-city lifestyle

A creative conversion has breathed 21st century life into this impressive modern contemporary terrace. Transformed from a historic local icon into an attractively presented hideaway, it remains a significant slice of local history within the St James Hall building that stands today. One of just 11 and privately positioned on Rosebank Street, it's an utterly unique opportunity in a popular lifestyle precinct, approx. 850 meters from Sydney University, approx. 1.6 km to Tramsheds eateries and approx. 650 meters to Glebe Point Road shops.

- Lofty multi-floor design offering an enticing sense of space & natural light
- Soaring entry panelled with floor-to-ceiling glass, tiled and carpeted floors
- Smeg gas kitchen with stone bench, mirrored splashback, smart storage
- Master with ensuite and second bed with private bathroom, built-ins and fans
- Internal laundry, flexible study area on level 1 with guest powder room
- Rinnai gas hot water system, intercom security, r/c air con
- Mounted bicycle storage, ample street parking, approx. 2.6km from CBD buses

**Inspect:** Thursday, 17th October 2024 5:30 - 5:50  
Saturday, 19th October 2024 10:45 - 11:00

**Price:** \$950 per week  
**Available Date:** 08/11/2024



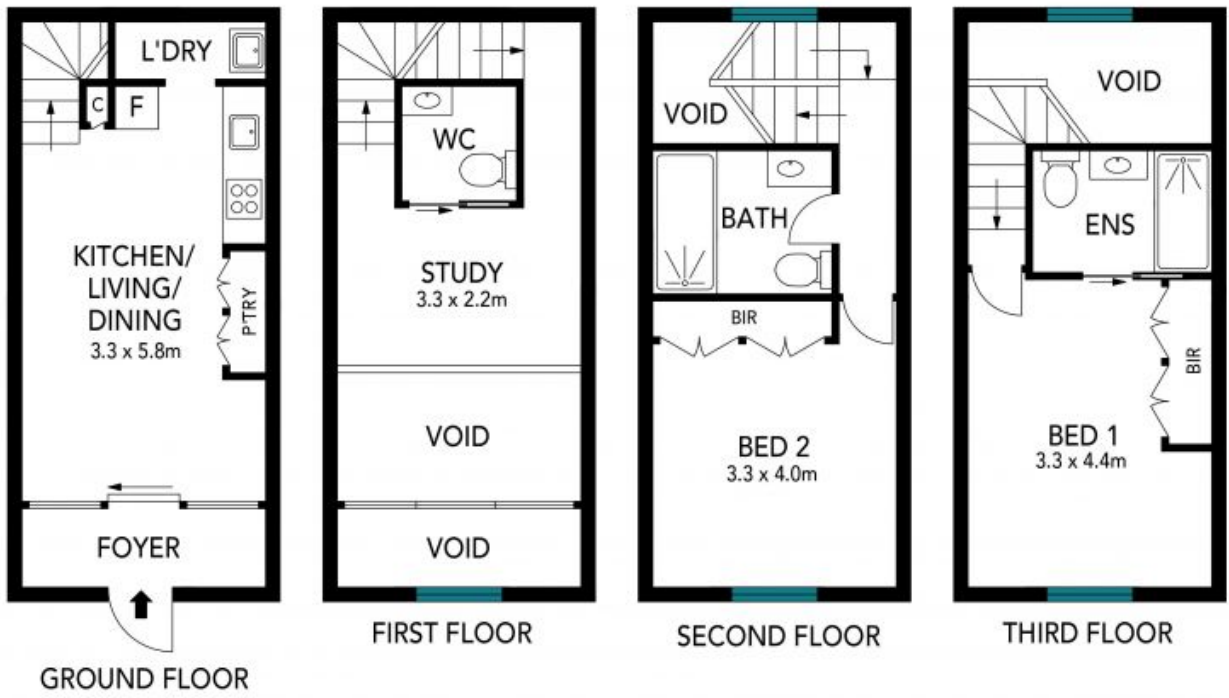
**Ashleigh Gray**

02 8893 2222



**Kevin Van**

02 8866 1500



The floor plan is not to scale; measurements are indicative and in metres. Exterior elements are not in position. Plans should not be relied on. Interested parties should make and rely on their own enquiries.



10/153 Bridge Road, Glebe

