



18 Gerard Avenue Condell Park, NSW



### Charming double brick home

Offered to the market for the very first time, we are delighted to present 18 Gerard Avenue, Condell Park.

Discover the perfect blend of comfort and convenience in this delightful three-bedroom home, ideally situated high on Black Charlies Hill with stunning district views. With a spacious layout and modern features and located close to Condell Park shopping center and public transport, this property is perfect for growing families or those seeking a peaceful retreat.

Features:

- > Each bedroom comes with built-in wardrobes, providing ample storage
- > One well-appointed bathroom plus an additional toilet for added convenience
- > Secure and spacious tandem garage with remote access, ensuring your vehicle and belongings are protected

...  
...  
...  
...

**Price:** Contact Agent  
**Council Rates:** \$1,578.00/year (approx)



**Troy Nicholson**

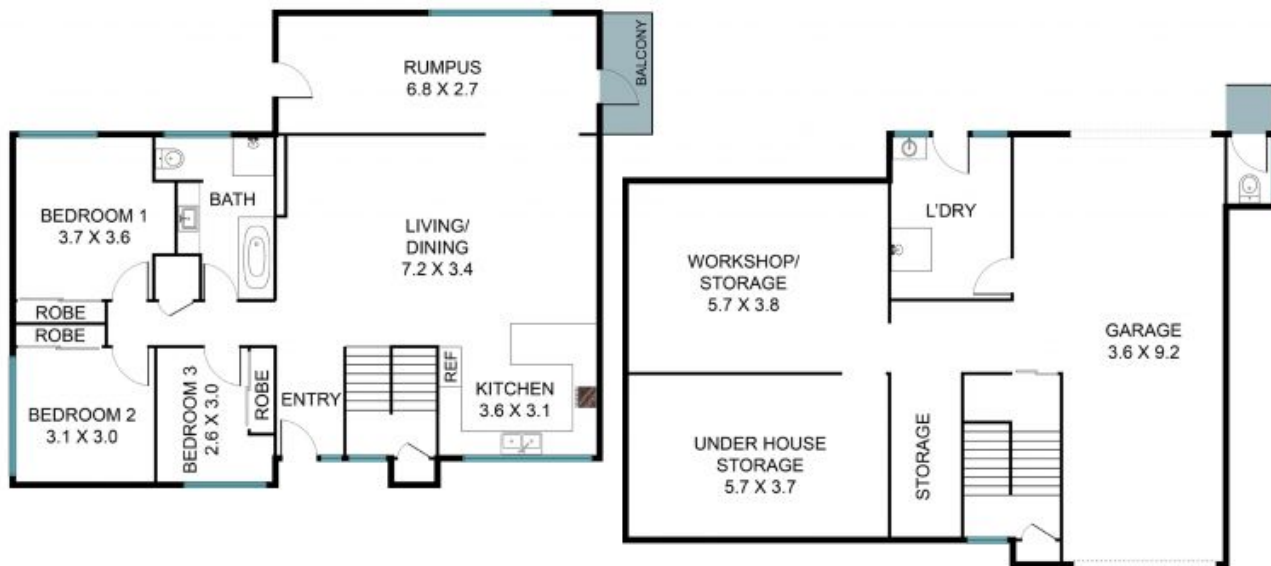
0438 801 234



**Mark Bricknell**

0438 801 234

STONE



## 18 Gerard Ave, Condell Park NSW 2200



The floor plan is not to scale, measurements and in metres. Exterior elements are not in position.  
Plans should not be relied on. Interested parties should make and rely on their own enquiries.  
All other information provided has been collected from reliable sources but cannot be guaranteed for accuracy.