



15/142 Hampden Road Artarmon, NSW 2 Beds 1 Bath 1 Car

SUN, SPACE & LIFESTYLE

- Sun-filled living with RC/AC & North-facing balcony
- Eat-in kitchen with SS gas cooker and laundry area
- Master bedroom with BIRs, tidy updated bathroom
- Boutique c.1970 block of 15 units, 6 in this section
- Surprisingly quiet & private, just one common wall
- Rear lane access to designated covered car space
- Artarmon Public & Chatswood High School catchment
- Close to Lane Cove village shops, eateries and pool

Inspect: Saturday, 21st September 2024 1:00 - 1:30
Wednesday, 25th September 2024 1:00 - 1:30

Auction: 12/10/2024 01:30 pm

Price: Auction - Contact Agent



Alex Andonian

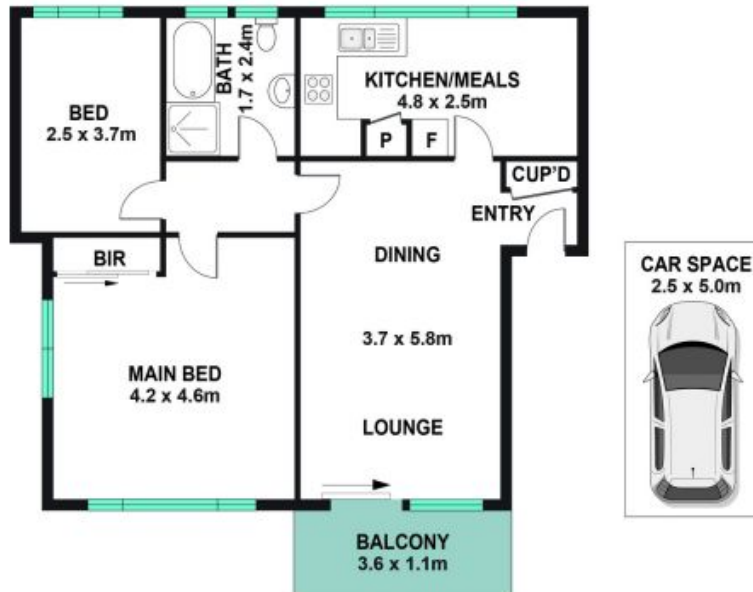
0432 018 535



Ryan Woo

0410 884 680

15/142 Hampden Road
Artarmon



Internal Living: 87 sqm
External Living: 16sqm
Total Living Area: 103 sqm



The site plan and floor plan are not to scale; measurements are indicative and in metres. Bushes and trees are placed for illustration purposes. Plans should not be relied on. Interested parties should make and rely on their own enquiries. All other information provided has been collected from reliable sources but cannot be guaranteed for accuracy.