

STONE



33/522-524 Pacific Highway Mount Colah, NSW

3

2

2

In a class of its own !

Occupying the top floor of a modern complex, this sophisticated, split-level penthouse features three bedrooms and is adorned with panoramic, lush district views. Recently renovated, the residence showcases elegant new timber flooring, remote-control blinds & sheers, plus a stylish inbuilt fireplace. The expansive north-westerly wrap-around balcony, accessible from both the living areas and bedrooms, offers an unparalleled indoor-outdoor living experience.

Effortlessly transition from the open-plan living space to the generous entertaining balcony, where you can bask in spectacular sunrises and sunsets.

Property features:

- Grand high ceilings enhanced by designer pendant lighting
- Complemented by new timber flooring and a refined blend of tile and carpet
- Gourmet kitchen boasting stone benchtops, a stainless-steel gas cooktop, oven, and dishwasher

Inspect:

Saturday, 21st September 2024 11:30 - 12:00

Price:

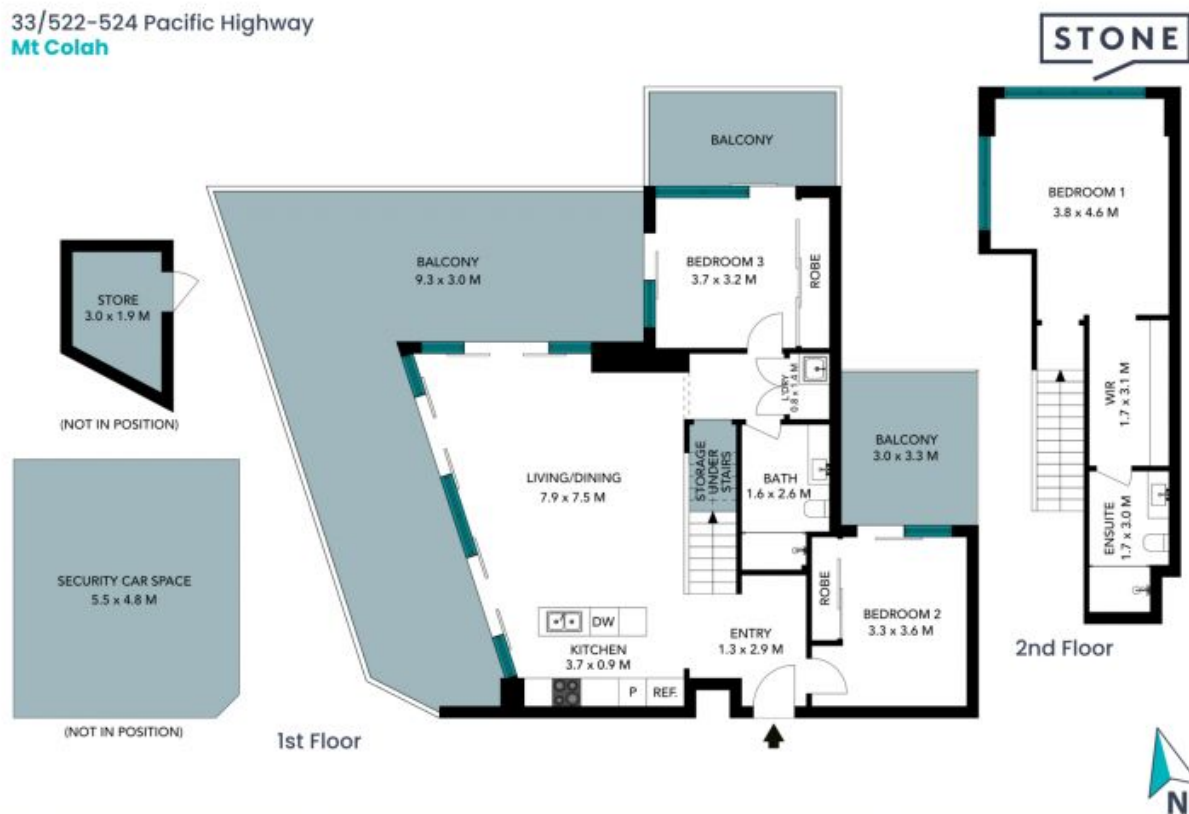
Guide \$1,050,000



Mathew Ferraro

0416 449 073

33/522-524 Pacific Highway
Mt Colah



The floor plan is not to scale, measurements are indicative and in metres. Exterior elements are not in position. Plans should not be relied on. Interested parties should make and rely on their own enquiries. All other information provided has been collected from reliable sources but cannot be guaranteed for accuracy.

33/522-524 Pacific Highway
Mt Colah

STONE



The floor plan is not to scale; measurements are indicative and in metres. All features included in this 3D plan are for inspiration purposes only. This is not an exact replica of the property or the position of exterior elements. Plans should not be relied on. Interested parties should make and rely on their own enquiries.