



DG02/28 Shepherd Street Liverpool, NSW



## Split Level Apartment Townhouse Style With 2 Bedrooms, 2 Bathrooms

Apply online : <https://t-app.com.au/app/page-1/>

This Huge Apartment is sunny and comfortable.  
This apartment has a courtyard on the ground floor. It has two entry doors from the lobby and a special door from the street.

Walk along Georges River to the Train Station, shopping, and Schools.

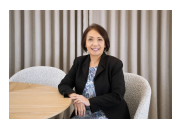
The landscape of one of Sydney's oldest heritage sites is changing into Liverpool's most sought-after new address, setting the standard of luxury living in Greater Western Sydney.

Features:

\*1 toilet downstairs for a bonus

**Inspect:** Saturday, 21st September 2024 10:00 - 10:30

**Price:** \$660 pw  
**Available Date:** 29/10/2024



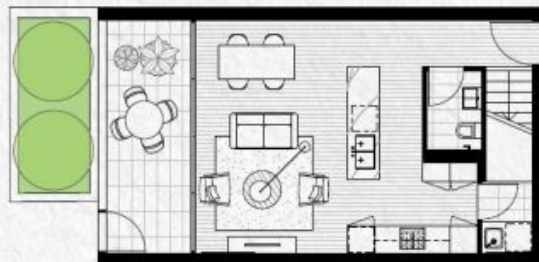
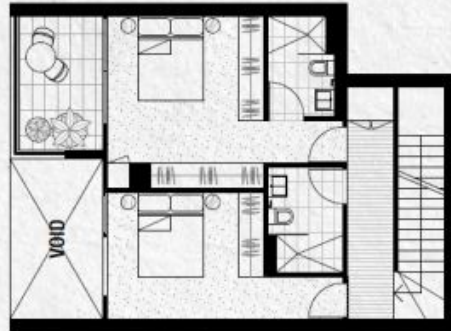
**Faletina Young**

0416 808 801



**Faletina Young**

0416 808 801



THE x BINDERY  
THE PAPER MILL ON GEORGE RIVER



2 BEDROOM

APARTMENT NUMBER	LEVEL
DG.02	G
AREA	
INTERNAL	94m <sup>2</sup>
EXTERNAL	24m <sup>2</sup>
TOTAL	118m <sup>2</sup>

WOODS

ASPECT Studios



NOTES: 1. Furniture shown is  
indicative. 2. Refer to Schedule  
of Finishes for list of materials,  
textures and colours.

SCALE

0 1 5m

LIVEATTHEPAPERMILL.COM.AU