



2619 Whittlesea Yea Road Flowerdale, VIC

3

2

2

A Country Home with Room to Grow

Set on a generous 1,649m² (approx.) block, this beautifully designed home blends comfort and style with serene country living. With an open-plan layout, a modern kitchen, and extensive outdoor space, it's the perfect setting for relaxed family life. Located on a quiet service road, this property backs onto King Parrot Creek and a scenic reserve, offering a peaceful retreat in nature's embrace.

Features include:

- 3 bedrooms, including a master with walk-in robe and ensuite
- Contemporary kitchen with island bench, ample pantry storage, and double fridge space
- Open living and dining area featuring a wood heater and split system air conditioning
- Glass sliding doors leading to a spacious deck, ideal for outdoor entertaining
- Expansive backyard with mature trees and ample room for pets, gardening, or play
- Concrete driveway with additional outdoor entertaining area

Inspect:

Saturday, 21st September 2024 3:00 - 3:30

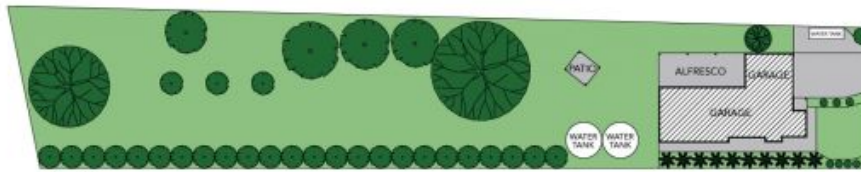
Price:

\$600,000 - \$660,000



Dean Zammit

0405 140 704



Site Plan



The site plan and floor plan are not to scale; measurements are indicative and in metres. Bushes and trees are placed for illustration purposes. Plans should not be relied on. Interested parties should make and rely on their own enquiries. All other information provided has been collected from reliable sources but cannot be guaranteed for accuracy.

2619 Whittlesea Yea Road
Flowerdale



The floor plan is not to scale; measurements are indicative and in metres. All features included in this 3D plan are for inspiration purposes only. This is not an exact replica of the property or the position of exterior elements. Plans should not be relied on. Interested parties should make and rely on their own enquiries.