



2/165 Carlingford Road Epping, NSW 3  2  2 

Full Brick Townhouse with Epping West Public School Catchment

Nestled in the heart of Epping, this stunning triple-level townhouse offers the epitome of modern living in a highly coveted location. Designed to elevate your lifestyle, this exceptional home is within the prestigious school zones of Epping West Public School, Cheltenham Girls, and Carlingford High School, ensuring top-tier education for your children.

- Expansive open-plan design with a generous dining and living area
- Functional kitchen with gas cooking
- 3 spacious bedrooms, 2 with balconies
- 2 separate bathrooms and an additional WC located on the ground floor
- Master bedroom with walk-in robe and ensuite featuring a relaxing spa bath
- Convenient internal laundry
- Additional living area on the first level
- Fully fenced private courtyard

Inspect: Wednesday, 18th September 2024 10:00 - 10:30
Saturday, 21st September 2024 10:00 - 10:30

Price: Contact Agent
Council Rates: \$316.00 p/q
Strata Rates: \$787.00 p/q



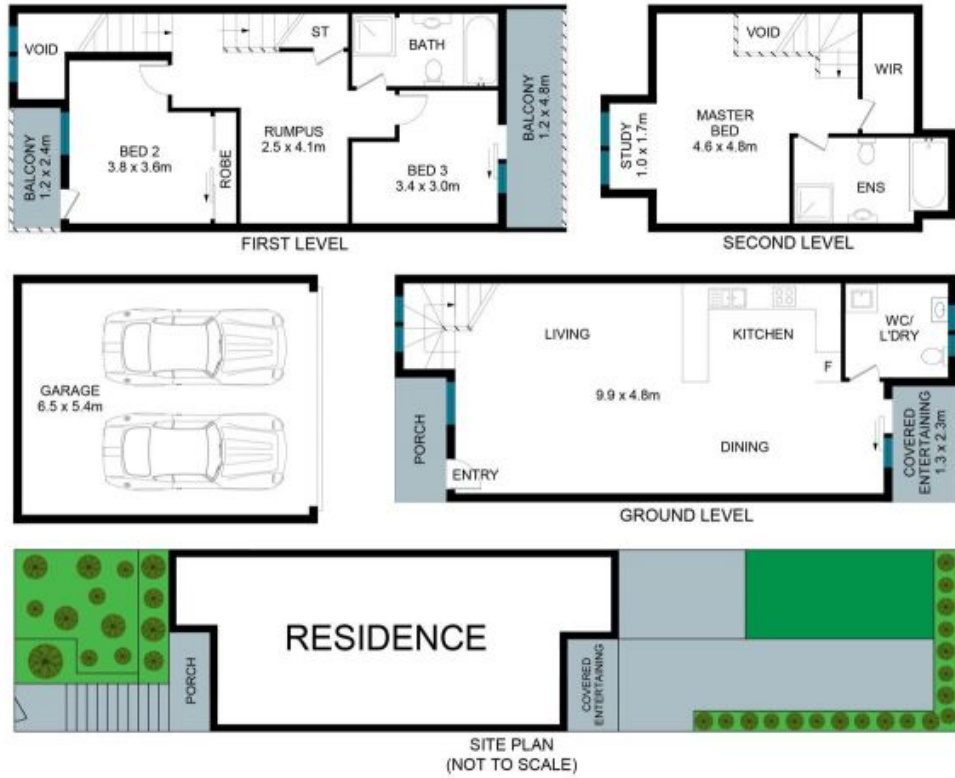
Juliet (Jiangmin) Chen

0408 997 997



Team Juliet

0466 907 733



The floor plan is not to scale; measurements are indicative and in metres. Exterior elements are not in position. Plans should not be relied on. Interested parties should make and rely on their own enquiries.

2/165 Carlingford Road, Epping

