



4.309/18 Hannah Street Beecroft, NSW



Luxury Apartment in Beecroft Place Complex

Enjoy all the luxury and lifestyle benefits of the spectacular 'Beecroft Place' complex. This residence brings plenty of natural lighting and views the peaceful Beecroft place courtyard, ideally suited to those seeking a quality low maintenance home in a convenient location.

- Spacious open plan design featuring natural oak floorboards.
- Ultra-modern kitchen with premium Miele appliances.
- Ducted air-conditioning, security entrance and security basement parking.
- Carpeted spacious bedroom with built in wardrobe .
- Sleek contemporary interiors with intercoms and security systems.
- Shops, cafes and dining directly below apartment complex and 100 meter walk to Beecroft Train Station and local bus stops.
- In sought-after school catchment of Beecroft Public School (300m), Cheltenham Girl's High School (1.5km) and Carlingford High School (3.3km).

Disclaimer: All information contained herewith, including but not limited to the general property description, price and the address, is provided to Stone Beecroft/Castle Hill/Epping by third parties. We have obtained this information from sources we believe to be reliable.

Price: \$620 per week

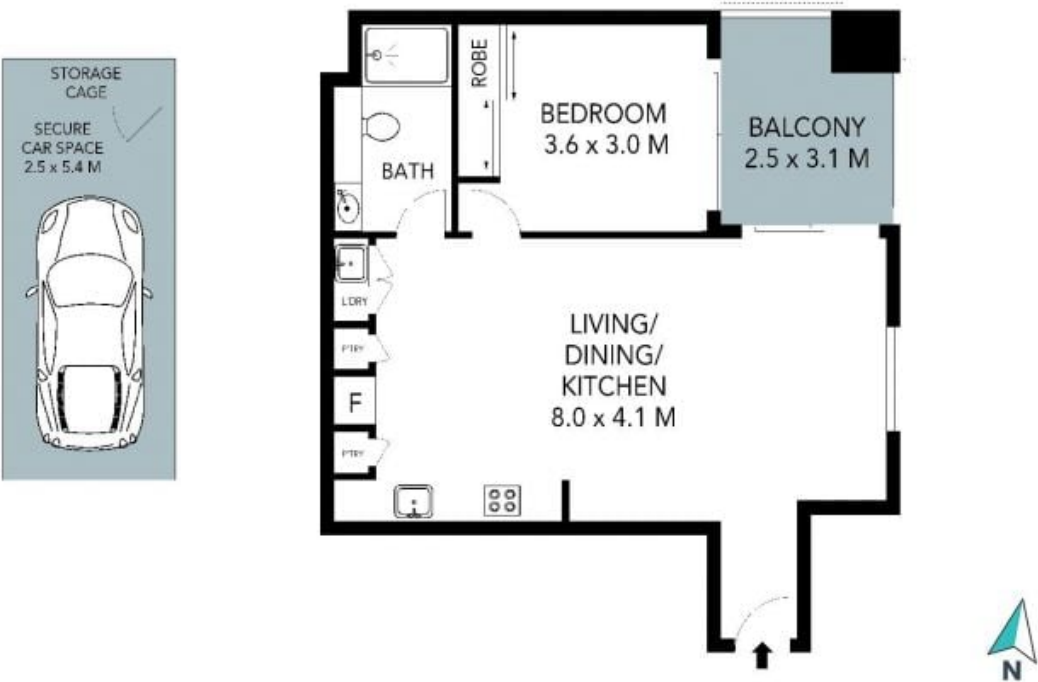
Available Date: 24/09/2024



Daniel Yao

8893 2245

4.309/18 Hannah Street,
Beecroft



The site plan and floor plan are not to scale; measurements are indicative and in metres. Bushes and trees are placed for illustration purposes. Plans should not be relied on. Interested parties should make and rely on their own enquiries. All other information provided has been collected from reliable sources but cannot be guaranteed for accuracy.