

10/5 Chester Street Epping, NSW 3  2  1 

Spacious and sundrenched, steps from Epping

Available on the market for the first time in 35 years, this second-floor apartment in a boutique complex offers a generous, versatile floorplan bathed in natural light, thanks to its sizeable north-facing balcony. Perfectly positioned within walking distance of Epping's vibrant lifestyle hub, it's zoned for Epping North Public, Cheltenham Girls, Epping Boys, and Carlingford High.

- Freshly painted interiors, uplifting with excellent airflow and broad windows
- Large master bedroom with an ensuite and effortless flow to the balcony
- Two more carpeted beds with built-ins, plus two storage cupboards at entry
- Classic-style kitchen with a wall oven, leafy outlook, and tiled splashback
- Main bathroom showcases a soaking bathtub and a separate corner shower
- Single lock-up garage and a spacious internal laundry room with a window
- Walk-to-everything lifestyle, approx. 450m to Epping station, cafes, and shops
- Approx. 800m to Epping Oval, 900m to Coles, 1.1km to Boronia Park Playground

Inspect: Wednesday, 18th September 2024 12:00 - 12:30
 Saturday, 21st September 2024 12:00 - 12:30

Auction: 28/09/2024 02:30 pm

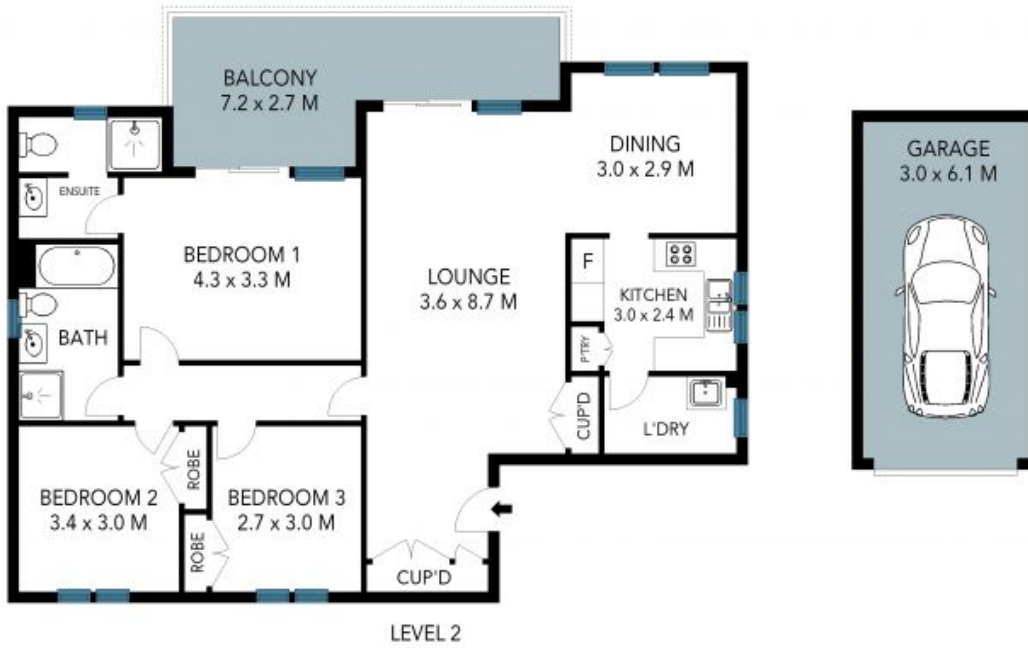
Price: Auction



Jeff Jianfu Luo
0425 286 668



Wenjie Luo
0433 971 007



The site plan and floor plan are not to scale; measurements are indicative and in metres. Bushes and trees are placed for illustration purposes. Plans should not be relied on. Interested parties should make and rely on their own enquiries. All other information provided has been collected from reliable sources but cannot be guaranteed for accuracy.