



23 Weenga Street Geebung, QLD 3 2 2

Ultra-Rare Flats

Almost never seen in Geebung (or Wavell) due to the residential zoning this super unique pair of flats sits ontop of an almost flat block, offering the perfect let-and-forget investment option or a perfect strategic hold to later redevelop for a home or more. Just seconds to local shops, cafes and the train station this will not last long!

- Generous 607sqm block
- Dual income for the savvy investor
- Incredible potential for knockdown / rebuild
- Spacious front and back yards
- Large storage area
- Surrounded by parks, sporting ovals and playgrounds
- Close to Shops, Schools and Public Transport including train station
- Geebung State School & Aspley State High School catchments

Unit #1

Price: Offers over \$950,000



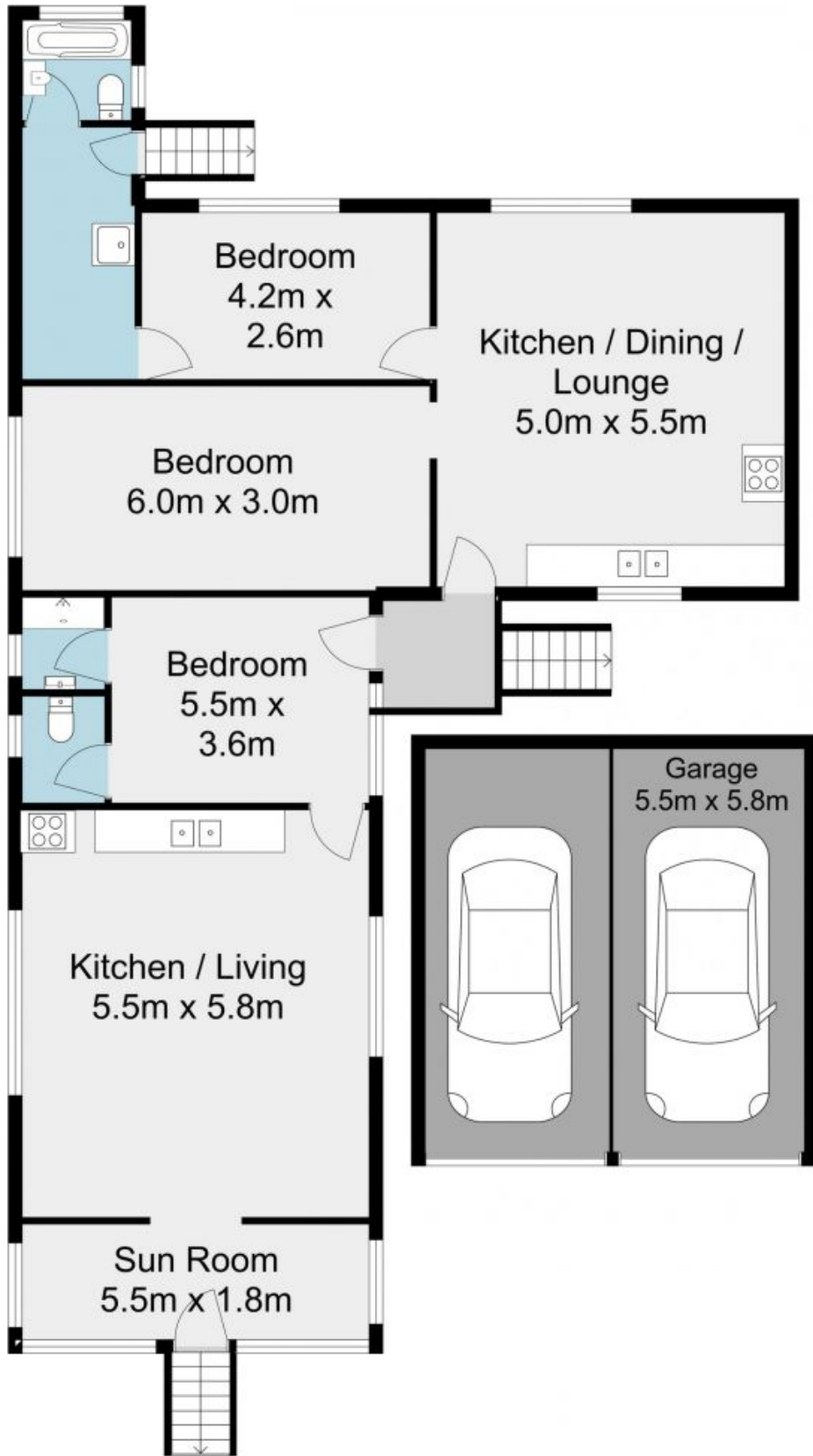
John Bradley

0410 454 718



Tristan Rowland

0411 572 970



- 3 
- 2 
- 2 
- 

23 Weenga St, Geebung

145m²

This plan is for illustrative purposes. Measurements are approximate. No responsibility is taken for errors, omissions or mis-statement.
 Stuart James Photography