



535/64 River Road Ermington, NSW

2 

2 

1 

## Stylish modern North-Facing Apartment

Experience modern living at its finest in this exquisite 2-bedroom, 2-bathroom apartment, located in the heart of Royal Shore riverside community, featuring a spacious living, situated in a sought-after location, this residence offers convenience, security, and a vibrant lifestyle, perfect for families and professionals alike.

### Key Features

- Open plan with spacious and bright living and dining areas
  - Modern kitchen equipped with Smeg gas cooking appliances and ample storage
  - 2 good size bedroom, master bedroom features a walk-in wardrobe and an ensuite, while the second bedroom includes a built-in wardrobe
  - North-facing balcony fills the living space with natural light and good privacy
  - Internal laundry with a dryer
  - Air conditioning in the living room
  - Secure parking with additional storage cage
  - Double security lock to access
- Prime Location

**Inspect:**

Saturday, 21st September 2024 1:00 - 1:30  
Saturday, 28th September 2024 1:00 - 1:30

**Price:**

\$680,000 - \$690,000



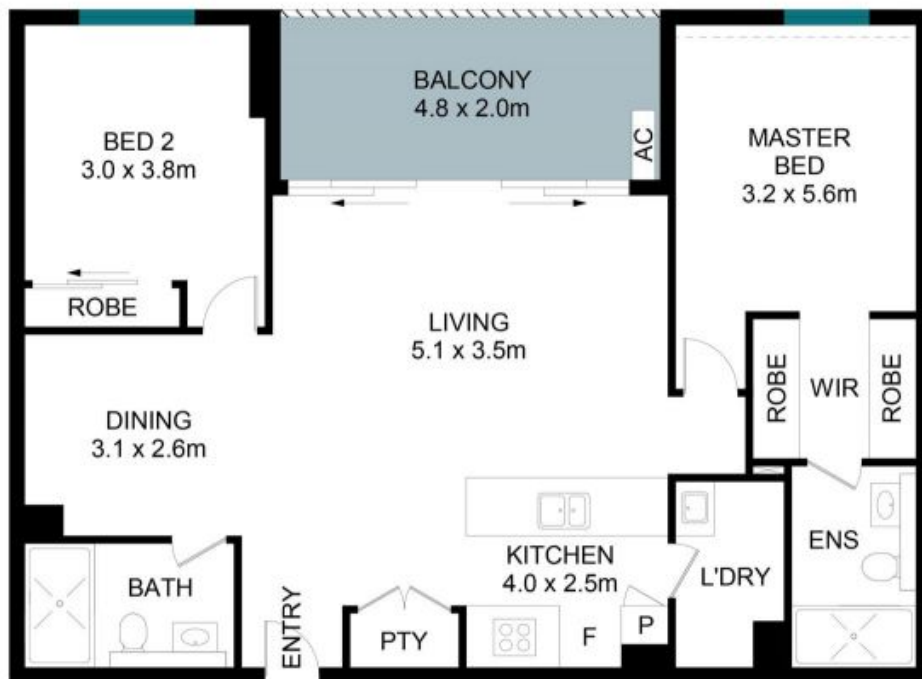
**Juliet (Jiangmin) Chen**

0408 997 997



**Team Juliet**

0466 907 733



STORAGE  
2.4 x 1.1m



The floor plan is not to scale; measurements are indicative and in metres. Exterior elements are not in position. Plans should not be relied on. Interested parties should make and rely on their own enquiries.



535/64 River Road, Ermington

STONE