



3405/1-8 Nield Avenue Greenwich, NSW



Executive Living & Walk to Rail Location

Set on the leafy and prestigious Lower North Shore, Auralia is discreetly positioned in a quiet cul-de-sac. This exclusive boutique residential complex features beautifully designed interiors and exteriors.

Located on the 4th floor, the spacious interior is stylish and reflects a Scandinavian design influence. The apartment features a modern open floor plan, which is bright and functional.

There is level lift access from the secure basement parking.

Perfect as an executive escape, city bolthole or investment opportunity, this superior apartment is located just a short walk to RNSH, St Leonards Station and direct buses.

Easy access to Crows Nest and Lane Cove villages, It offers a sophisticated, low-maintenance lifestyle.

- Modern bathroom with stone bench top

* All information contained herein is gathered from sources we consider to be reliable. Ho...

Inspect: Wednesday, 18th September 2024 10:30 - 11:00

Auction: 05/10/2024 10:30 am

Price: Auction Guide: \$695,000

Council Rates: \$401.00 p/q



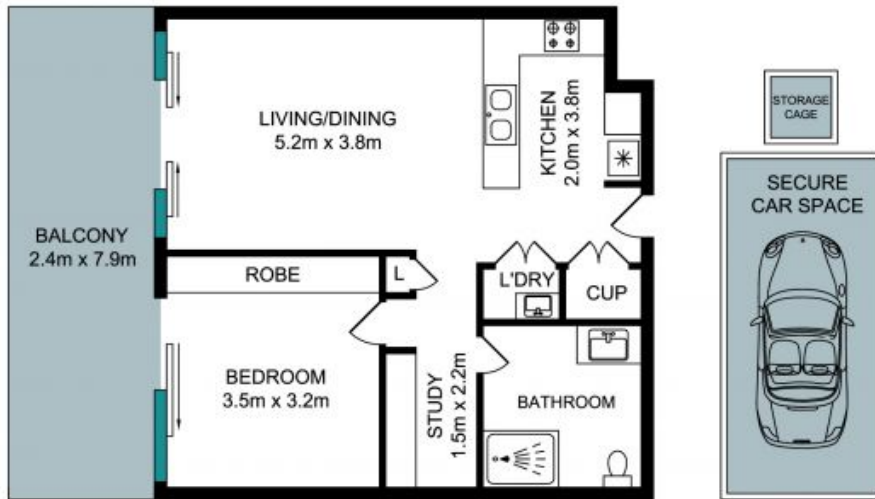
Chris Keane

0497 102 114



Desiree Hough

0404 860 898



The Floor plan is not to scale, measurements are indicative and in meters. Subfloor elements are not in position. Plan should not be relied on. Interested parties should make and rely on their own enquiries. All other information provided has been collected from reliable sources but cannot be guaranteed for accuracy.

3405/1-8 Nield Avenue, Greenwich

