



12a/16 Campbell Parade Manly Vale, NSW



Capturing tranquility and privacy

This beautifully finished apartment is tucked away back from the road offering tranquillity and privacy. Positioned directly adjacent to the golf course, it's mere metres from buses while also being minutes from Warringah Mall and a choice of beaches. The interiors have been designed to showcase a superb use of space with quality finishes, whilst the residence captures a picturesque leafy outlook. The apartment enjoys an abundant of morning sunlight and refreshing breezes, ensuring a pleasant living experience year-round.

- Cleverly designed pull-out desk creates a home office or additional dining space.
- Undercover balcony with leafy Easterly aspect.
- Modern kitchen with mirrored splashback and ample bench space.
- Generous sized bedroom with plantation shutters and built-in wardrobe.
- Sleek fully tiled bathroom with timber look vanity, and rain head shower.
- Near new blinds throughout, shared laundry, allocated carport.
- Only moments away to Coles, Woolworths and Aldi, plus cafes and eateries.
- Easy bike ride to Manly's beaches, wharf and eateries.

Price:

Contact Agent



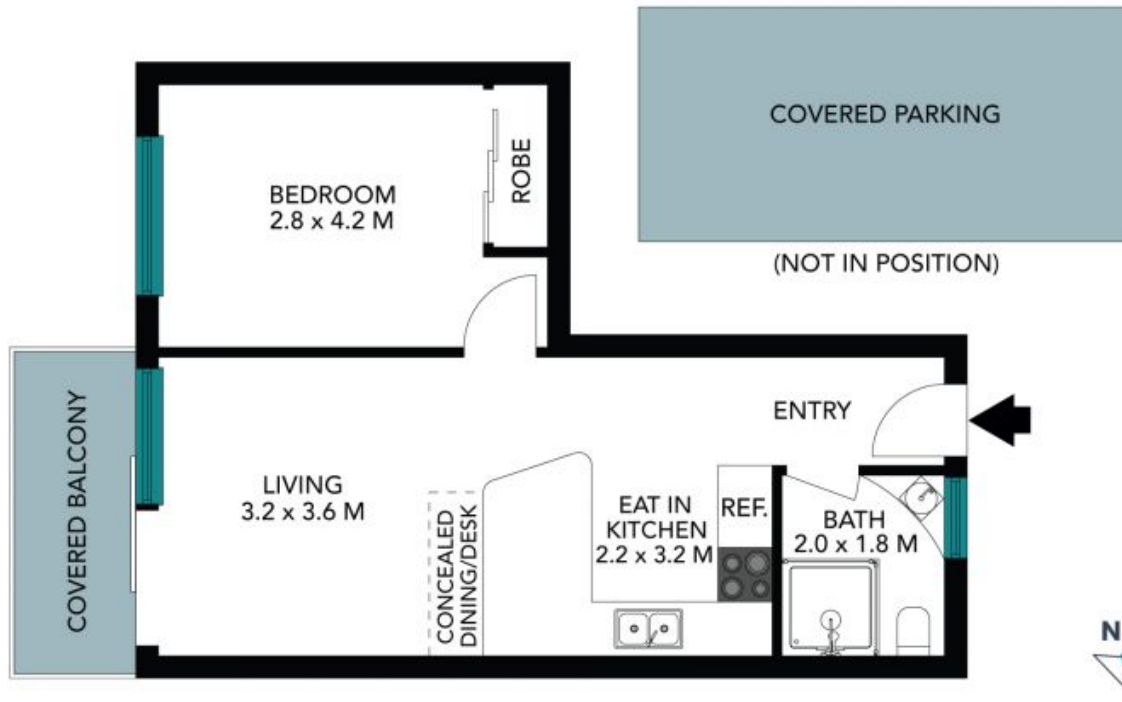
Tim Mumford

0421 942 693



Catherine Wilson

0421 966 570



The floor plan is not to scale. Measurements are indicative and in metres. Exterior elements are not in position. Plans should not be relied on. Interested parties should make and rely on their own enquiries. All other information provided has been collected from reliable sources but cannot be guaranteed for accuracy.

12A/16 Campbell Parade
Manly Vale



The floor plan is not to scale; measurements are indicative and in metres. All features included in this 3D plan are for inspiration purposes only. This is not an exact replica of the property or the position of exterior elements. Plans should not be relied on. Interested parties should make and rely on their own enquiries.