



9/29 Lorne Avenue Killara, NSW

3

2

2

Luxury penthouse unit

Featuring outstanding quality and generous proportions this unit offer a contemporary lifestyle in a convenient location. Situated in a modern security building with direct lift access nurtures easy living.

Features include:

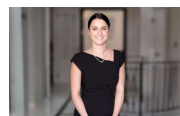
- Spacious open plan lounge and dining basking in northerly sunlight open to a large terrace
- Contemporary gas kitchen, stone bench island and Miele appliances
- Three double bedrooms with built in robes
- Two bathrooms with double vanity, good storage, bath and shower in main
- Internal laundry with washer and dryer
- Secure double car space plus two storage lockup cage
- Stroll to rail, walk to popular Greengate Hotel, Regimental Park across the road
- In Killara Public and Killara High School catchments

Disclaimer: Stone Real Estate believes that this information is correct but does not warrant or guarantee the accuracy of the information. Certain information has been obtained from external sources and has not been independently verified. You should make your own enqui...

Price: \$1450 per week

Bond: \$5,800

Available Date: 16/09/2024



Natasha Amos

0415 755 587



Stephanie Ryan

0451 307 760