

13/25-27A Wongala Crescent Beecroft, NSW



Two bedroom + study apartment in Beecroft Primary catchment

For inspections, enter from Chapman Ave

A flawlessly finished contemporary haven nestled in "The Grove", this idyllic residence encapsulates spacious luxury and unparalleled convenience, with a lush leafy outlook. A sunlit sanctuary featuring an open-plan layout, it's adorned with high-end finishes and opulent touches, sitting at the epicentre of lifestyle ease, steps from Beecroft village, eateries and transport.

- Exceptional sense of spaciousness and style, enhanced by 2.7m-high ceilings
- A beautifully presented private oasis with fresh paint and no common walls
- Well-configured layout offers open plan living/dining plus devoted study space
- Wraparound all-weather balcony with privacy screens, ideal for entertaining
- Stylish Miele gas kitchen with a breakfast bar and semi-integrated dishwasher
- Two generous beds with built-ins, master has an elegant ensuite with a bath
- Opulent main bathroom showcases a rain shower and floor-to-ceiling tiles

Inspect: Saturday, 21st September 2024 2:00 - 2:30
Auction: 28/09/2024 12:00 pm

Price: Auction Guide: \$1,150,000
Council Rates: \$391.05 p/q
Water Rates: \$172.79 p/q



Kevin Dearlove

0403 338 302



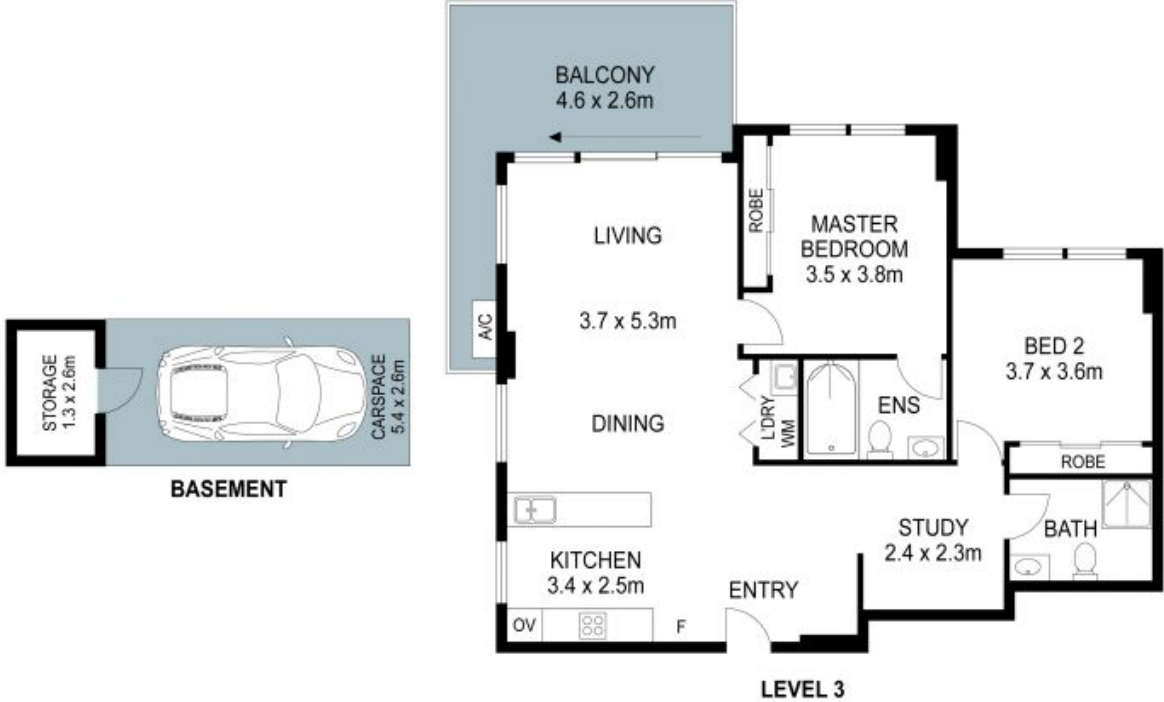
Jeff Jianfu Luo

0425 286 668

13/25-27 Wongala Crescent, Beecroft



2 Beds 2 Bathrooms 1 Car 1 Stair



THIS IS AN ARTIST'S IMPRESSION - ALL DIMENSIONS, LAYOUTS AND TREES ARE APPROXIMATE
ALL INTERESTED PARTIES SHOULD MAKE AND RELY ON THEIR OWN ENQUIRIES

