



37a Wirripang Street Fletcher, NSW

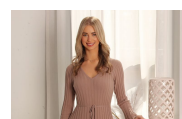
3 2 1

Effortless, modern living in sanctuary estate

Experience the epitome of low-maintenance living in this stylish three-bedroom duplex at Sanctuary Estate. With two separate living areas, a sleek Caesarstone kitchen, and a covered alfresco space perfect for entertaining, this home is designed for those who value their time. Say goodbye to weekend chores and hello to more of what truly matters-this is easy living at its finest.

- Brick and Colorbond Torrens title duplex on low maintenance 286sqm block
- Two separate living areas, a/c & gas heating to family/dining at rear
- Caesarstone kitchen with gas cooktop and dishwasher
- Sliding door access to covered alfresco and private garden
- Three robed bedrooms, main with a/c and ensuite
- Internal access from single auto garage, extra parking in front
- 1300m - Bishop Tyrrell Anglican College, 2.5km - Glendore Public School
- 1.8km - Fletcher Village, 14km - Newcastle CBD, 8km - M1 & Hunter Expressway

Price: \$730,000 - \$750,000



Courtney Matheson

0400 768 103



David Tanchevski

02 4089 1111



The site plan and floor plan are not to scale; measurements are indicative and in metres. Bushes and trees are placed for illustration purposes. Plans should not be relied on, interested parties should make and rely on their own enquiries. All other information provided has been collected from reliable sources but cannot be guaranteed for accuracy.





The site plan and floor plan are not to scale; measurements are indicative and in metres. Bushes and trees are placed for illustration purposes. Plans should not be relied on. Interested parties should make and rely on their own enquiries. All other information provided has been collected from reliable sources but cannot be guaranteed for accuracy.