

13 Corella Close Aberglasslyn, NSW

4  2  1 

Lovely Views and Brand New!

This lovely home opens to bright interior with open plan kitchen, dining and separate family room/media space. With newly established tidy easy care lawn front and back, uninterrupted peaceful views, these units are brand new and ready to go! (LEFT and RIGHT units - the same/mirror image. Right Unit labelled 13a)

Also featuring;

- Ducted air conditioning throughout
- Fresh new kitchen with island bench, 900mm stove/oven, plenty of cupboard space and dishwasher to be installed
- The master bedroom with ensuite, walk in robe, ceiling fans to be installed
- Remaining three bedrooms all with built-in wardrobes (ceiling fans to be installed)
- Beautiful floor to ceiling cream tiles, the main bathroom has separate shower to bathtub
- Outdoor alfresco area off the main living area and kitchen space
- Fully fenced easy care yard, newly laid lawns
- Single remote garage with internal access

Price: \$600 per week

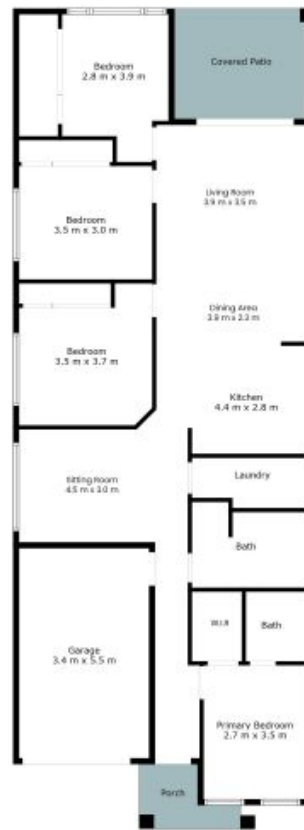
Available Date: 02/09/2024



Katrina Vitnell

02 4089 1122

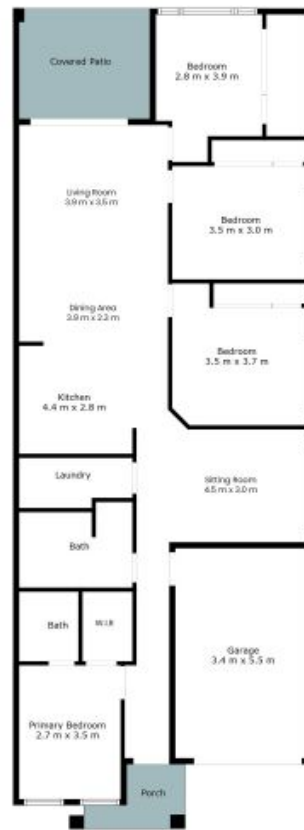
13 Corella Close
Aberglasslyn



The site plan and floor plan are not to scale; measurements are indicative and in metres. Bushes and trees are placed for illustration purposes. Plans should not be relied on. Interested parties should make and rely on their own enquiries. All other information provided has been collected from reliable sources but cannot be guaranteed for accuracy.



13 Corella Close
Aberglasslyn



The site plan and floor plan are not to scale; measurements are indicative and in metres. Bushes and trees are placed for illustration purposes. Plans should not be relied on. Interested parties should make and rely on their own enquiries. All other information provided has been collected from reliable sources but cannot be guaranteed for accuracy.

