

3/4 Lime Street Whittlesea, VIC

2 1 1

Cozy and Convenient Living in Whittlesea

Discover your perfect home at Unit 3/4 Lime Street, Whittlesea! This charming 2-bedroom, 1-bathroom unit offers a comfortable lifestyle with modern updates and an unbeatable location just steps from Whittlesea's vibrant main street. Don't miss this opportunity for convenient and cozy living in the heart of Whittlesea!

Features include:

- Freshly painted and new carpet throughout
- Open plan kitchen, meals, and living area
- Generous-sized kitchen
- Both bedrooms with built-in robes
- Private courtyard with storage shed
- Single carport
- Just meters from local shops, cafes, and amenities

Currently leased at \$1434 PCM

Price: \$350,000 - \$380,000



Dean Zammit

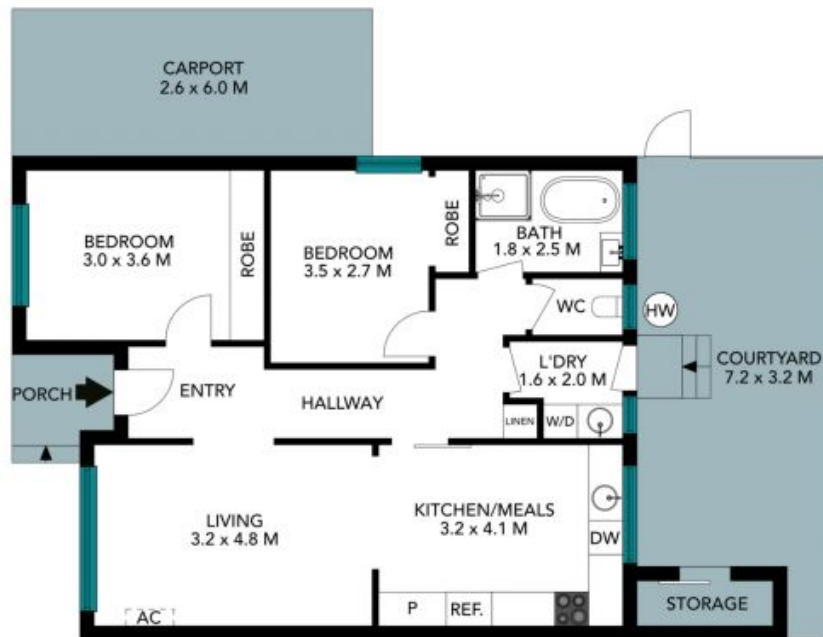
0405 140 704



Teleisha Godfrey

0407 529 378

3/4 Lime Steet
Whittlesea



The floor plan is not to scale, measurements are indicative and in metres. Exterior elements are not in position. Plans should not be relied on. Interested parties should make and rely on their own enquiries. All other information provided has been collected from reliable sources but cannot be guaranteed for accuracy.

3/4 Lime Steet
Whittlesea



The floor plan is not to scale; measurements are indicative and in metres. All features included in this 3D plan are for inspiration purposes only. This is not an exact replica of the property or the position of exterior elements. Plans should not be relied on. Interested parties should make and rely on their own enquiries.