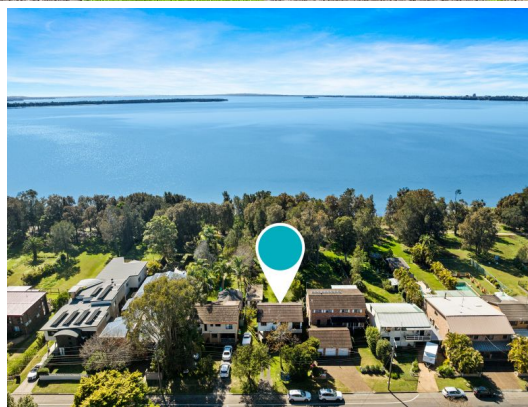
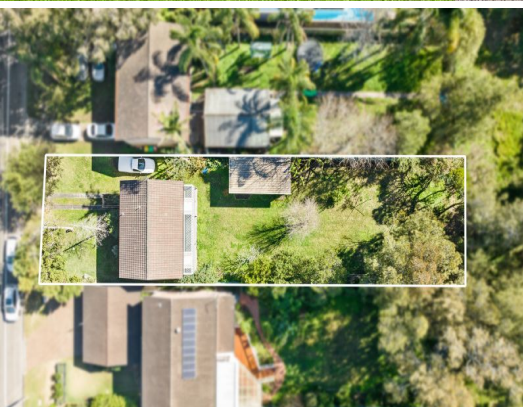


STONE



177 Lakedge Avenue Berkeley Vale, NSW

3 

1 

1 

## Rebuild your dream waterfront home!

Presenting a rare opportunity located in the heart of Berkeley Vale with a front row seat to our beautiful Tuggerah lakes water system. This double storey home boasts multiple living spaces, spacious bedrooms and side access leading to a large lock up garage all sitting on a large 913sqm (approx.) block. Offering direct access to the popular cycleway and walking track, you'll take in the fantastic water views on your morning walks or evening stroll. The property is R2 low density zoning and is a flat level parcel of land, making this the perfect canvas to start your lakeside living dreams come true!

- Direct access to Tuggerah Lakes with a waterfront position!
- Impressive 913m2 flat block
- Large lock up garage with plenty of off street parking and access to back yard

**Inspect:**

Thursday, 19th September 2024 5:00 - 5:30  
Saturday, 21st September 2024 1:00 - 1:30

**Price:**

\$890,000



**Volkan Akintetik**

0499 830 247



**Reece Caira**

0431 013 342





FLOOR 1



FLOOR 2

LAND SIZE: 913sqm  
INTERNAL: 114sqm  
EXTERNAL: 45sqm

PLEASE NOTE: These Floorplan + Site Plans have been generated for marketing purposes and are to be used as a guide only.  
While all care is taken, no guarantee can be given in respect of accuracy; sizes and dimensions are approximate, actual may vary.

