

9/2 Jefferson Court Upper Coomera, QLD

3

2

1

RENTAL INVESTMENT OFFERS EXCEPTIONAL VALUE IN A PRIME LOCATION

Currently rented until 9th June 2025 at \$650 per week this investment only prospect returns a great yield and has experienced 100% capital growth over the last 4 years.

Discover the perfect blend of comfort, convenience, and community living with this beautifully maintained townhouse in Jefferson Court. Nestled in a sought-after complex with a pool, this property offers a prime location with easy access to Westfield Shopping Centre, St Stephens Private School, and a range of other esteemed private and public schools. Public transport is also just a short distance away.

Key Features Include:

- Generous Master Bedroom: Enjoy a spacious retreat with an ensuite, walk-in robe, and a private balcony.
- Two Additional Bedrooms: Both feature built-in wardrobes.
- Family Bathroom: Equipped with both a bath and shower.

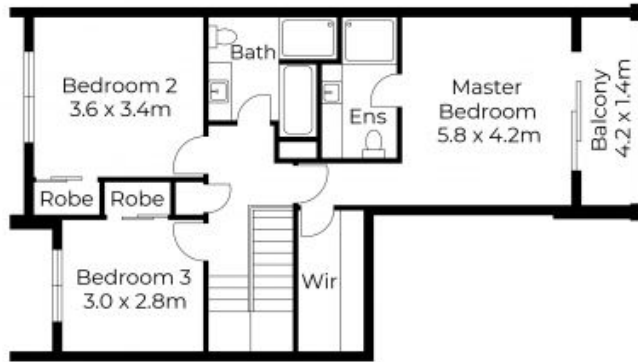
Price:

Offers Over \$689,000



Andrew Colley

0488 217 803



First Floor



Ground Floor



Floor plans and site plans are for illustrative purposes only. They are not part of any legal document or title and are subject to errors, omission, and inaccuracies. Whilst every attempt has been made to ensure the accuracy of this plan, measurements of doors, windows, rooms, cupboards etc are approximate only.

APPROXIMATE AREA
 LIVING AREA : 140m²
 TOTAL AREA : 193m²



Ground Level

First Level



Floor plans and site plans are for illustrative purposes only. They are not part of any legal document or title and are subject to errors, omission, and inaccuracies. Whilst every attempt has been made to ensure the accuracy of this plan, measurements of doors, windows, rooms, cupboards etc are approximate only.

APPROXIMATE AREA
 LIVING AREA : 224 m²
 TOTAL AREA : 244 m²