

110 Mount View Close Razorback, NSW

4 

1 

3 

6 

## Wake up to this

Nestled in the serene hills of Razorback, this magnificent 5-acre property offers the perfect blend of luxury, space, and tranquility. The main residence features 4 large bedrooms and 3 bathrooms, while a fully self-contained separate 3-bedroom, 1-bathroom area provides additional living space for extended family or kids retreat. Enjoy breathtaking views of the surrounding paddocks from the comfort of your home, complete with a 40m stone benchtop kitchen that seamlessly blends style with functionality.

### Features:

- Spacious 4 bedrooms with ample natural light
- 3 modern bathrooms
- Self contained 2 bedroom separate residence
- 6-car garage, perfect for car enthusiasts
- 4 separate paddocks, ideal for horses or livestock
- 44 solar panels for energy efficiency
- Wrap-around verandah for outdoor entertaining

Price:

\$2,260,000



**Chris Philp**

0418686511

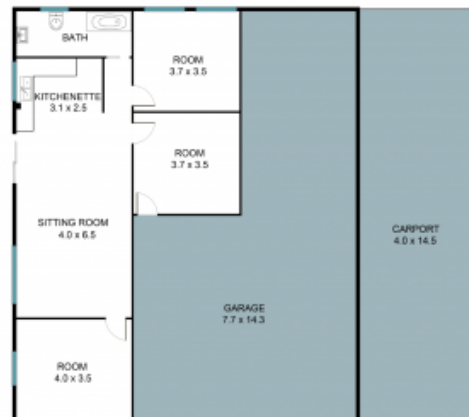


**Sarah Hales**

0401 403 588



### Self Contained Residence



## 110 Mount View Cl, Razorback NSW 2571



The floor plan is not to scale, measurements and in metres. Exterior elements are not in position.  
Plans should not be relied on. Interested parties should make and rely on their own enquiries.  
All other information provided has been collected from reliable sources but cannot be guaranteed for accuracy.