



4/14 Park Avenue Westmead, NSW



Park Facing! Offering Convenience and Serenity

Located in secure block and perfectly positioned facing Parramatta Park, offering an amazing opportunity for those looking to move in or invest. A perfect blend of convenience and serenity, this Apartment is the perfect opportunity to experience all Westmead has to offer. Find yourself within walking distance from Parramatta Park, Westmead Public & Children's Hospital, Westmead Train Station and upcoming Light Rail & Metro, Local shops and Schools.

- Newly Renovated - Freshly Painted, New Wooden Floorboards and LED Lighting
- Two Generous Bedrooms with Built in Robes, Master with Ensuite
- Modern Kitchen with Stone benchtops, Stainless steel appliances & Gas Cooking
- Open plan living and dining area with split-system air-conditioning and views of Parramatta Park
- Spacious balcony offering undercover entertaining options whilst boasting a serene leafy outlook
- Two secure car spaces & Two storage cages
- Secure Building, Intercom and Lift Access

Disclaimer: This advertisement is a guide only. Whilst all information has been gathered f...

Inspect:

Thursday, 19th September 2024 5:00 - 5:30

Auction:

Saturday, 21st September 2024 3:30 - 4:00
21/09/2024 04:00 pm

Price:

Auction This Saturday - Guide: \$600,000



Simar Gill

0410 312 242

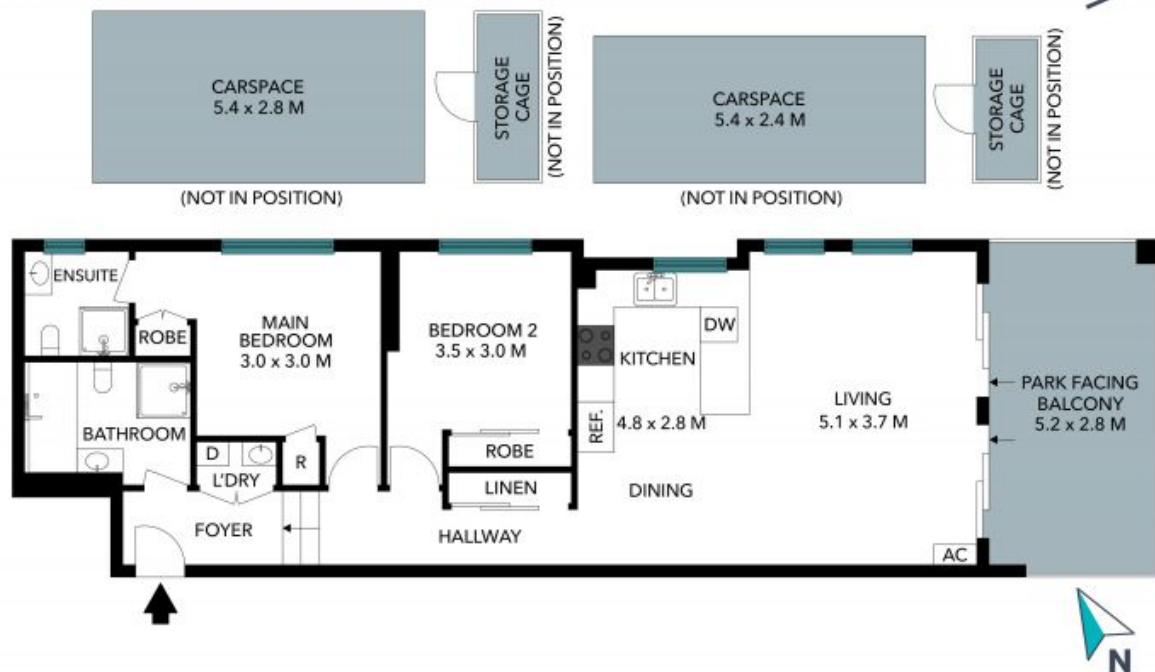


Chris Kypreos

0432 354 445

4/14 Park Avenue
Westmead

STONE



The floor plan is not to scale; measurements are indicative and in metres. Exterior elements are not in position. Plans should not be relied on. Interested parties should make and rely on their own enquiries. All other information provided has been collected from reliable sources but cannot be guaranteed for accuracy.

4/14 Park Avenue
Westmead

STONE



The floor plan is not to scale; measurements are indicative and in metres. All features included in this 3D plan are for inspiration purposes only. This is not an exact replica of the property or the position of exterior elements. Plans should not be relied on. Interested parties should make and rely on their own enquiries.