



26/75 Elizabeth Jolley Crescent Franklin, ACT



### North-facing one bedroom apartment only metres from light rail

Embrace a lifestyle of effortless comfort and convenience in this bright apartment, located in the lively Franklin area of Northern Canberra.

Bathe in abundant natural light as you step into the North-facing living and dining area, which creates a warm and welcoming atmosphere throughout the day. Designed with contemporary flair, this versatile space is ready for you to furnish to your taste, perfectly suited for work, leisure, and entertainment.

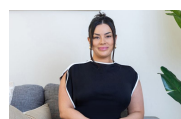
...

- Open plan and practical layout
- Brand new flooring throughout
- Spacious U-shaped kitchen
- Reverse cycle heating and cooling unit
- Bedroom with built in wardrobe

**Price:** \$440 per week

**Bond:** \$1,840

**Available Date:** 30/08/2024



**Tahlia Dal Broi**

0439 882 499



**Jess Campbell**

0439 882 499



Ground Floor



The site plan and floor plan are not to scale; measurements are indicative and in metres. Bushes and trees are placed for illustration purposes. Plans should not be relied on. Interested parties should make and rely on their own enquiries. All other information provided has been collected from reliable sources but cannot be guaranteed for accuracy.

26/75 Elizabeth Jolley Crescent  
Franklin



The floor plan is not to scale; measurements are indicative and in metres. All features included in this 3D plan are for inspiration purposes only. This is not an exact replica of the property or the position of exterior elements. Plans should not be relied on. Interested parties should make and rely on their own enquiries.