



4 Hillier Close Camden Park, NSW

7

1

6

8

### One of Camden Parks finest

Welcome to this Grand Camden Park Residence, a masterpiece of elegance and comfort situated in one of Camden's most prestigious neighbourhoods. This stunning home offers an expansive, sun-filled living space designed for both relaxation and sophisticated entertaining. Every detail has been thoughtfully crafted to provide a luxurious lifestyle in an unbeatable location.

The property includes a beautifully appointed guest accommodation, separate granny flat or teenage retreat, perfect for hosting friends and family. Whether for short stays or extended visits, the guest suite offers complete privacy and comfort, making your guests feel right at home.

For car enthusiasts, the residence features an impressive 8-car garage, providing ample space for your collection, extra storage, or hobbies. This rare amenity ensures that you'll never have to compromise on security or space.

Nestled in the serene surroundings of the Bridgewater estate at Camden Park, you'll enjoy the tranquility of the area while being just moments away from Camden's top dining, shopping, and cultural attractions. This residence offers the perfect balance of luxury and con...

**Inspect:** Saturday, 21st September 2024 1:45 - 2:15

**Price:** For Sale



**Cameron Mitchell**

0439 185 740

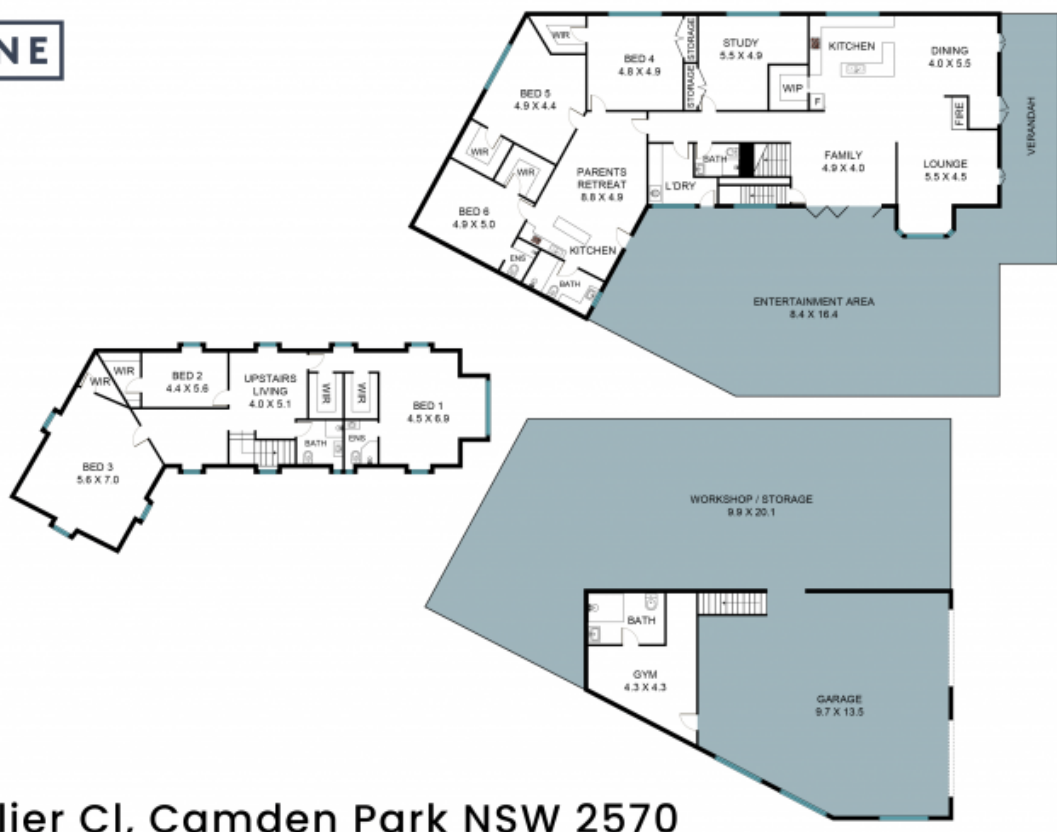


**Bennett Parkinson**

0420 213 456



**STONE**



## 4 Hillier Cl, Camden Park NSW 2570



The floor plan is not to scale, measurements and in metres. Exterior elements are not in position. Plans should not be relied on. Interested parties should make and rely on their own enquiries. All other information provided has been collected from reliable sources but cannot be guaranteed for accuracy.