

50 Gloucester Road Epping, NSW



## Family Oasis with Spectacular Bushland Views

Nestled on an expansive 1,113sqm, this magnificent family haven offers a splendid outlook and effortless flow to the outdoors, ideal for carefree entertaining with a balcony overlooking the pool. With enviable charm, warmth, and timeless elegance, it's a private sanctuary and an unforgettable family setting, zoned for Epping Public, Cheltenham Girls, Epping Boys, and Carlingford High.

- Three living spaces open to outdoors, with a formal lounge, living, and rumpus
- Central kitchen with gas cooktop, double oven, semi-integrated dishwasher
- Four generous bedrooms, master with walk-through robe and chic ensuite
- Spacious family bathroom featuring a shower over bath and a new vanity
- Light-filled, generously proportioned interiors with excellent natural airflow
- Versatile layout with a sunlit home office and a dedicated wine cellar
- Downstairs area ideal for teenagers or house guests, complete with bathroom
- Expansive all-weather deck and shaded patio, ideal for year-round entertaining

**Inspect:** Wednesday, 18th September 2024 11:00 - 11:30

**Auction:** Saturday, 21st September 2024 9:15 - 9:45  
21/09/2024 09:45 am

**Price:** Auction This Saturday!



**Kevin Dearlove**

0403 338 302



**Danny Jing**

0430 025 586

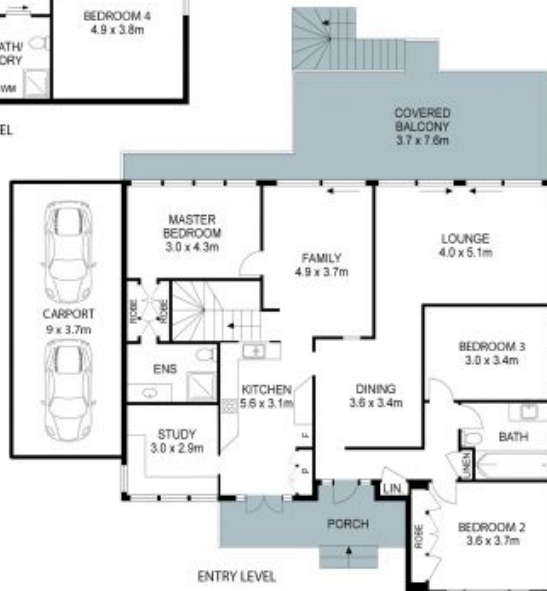


# 50 Gloucester Road, Epping

4 3 2 1113m<sup>2</sup>



GROUND LEVEL



ENTRY LEVEL



THIS IS AN ARTIST'S IMPRESSION - ALL DIMENSIONS, LAYOUTS AND TREES ARE APPROXIMATE  
ALL INTERESTED PARTIES SHOULD MAKE AND RELY ON THEIR OWN ENQUIRIES

