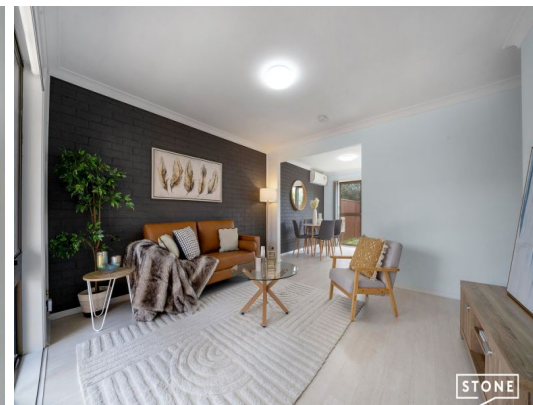


STONE



15/11 Campbell Hill Road Chester Hill, NSW

2

1

1

Charming Two-Bedroom Townhouse in Prime Location

Nestled on a peaceful street, this recently renovated two-bedroom townhouse offers a perfect blend of comfort and convenience. Located within walking distance of Chester Hill North Public School, Chester Hill High School, Sunnyside Early Learning Centre, and several parks and reserves, this home is ideal for families and those who appreciate a serene yet accessible lifestyle.

Step inside to find inviting open-plan living and dining areas, featuring a new split-system air-conditioner for year-round comfort. The spacious kitchen boasts stone benchtops, a breakfast bar, ample cupboard space, and a new electric stovetop-perfect for home cooks and entertainers alike. An internal laundry with external access adds to the functionality of this home, along with an additional toilet on the ground floor for guests.

Throughout the home, you'll find recently painted interiors, brand-new carpet, and all-new LED light fittings, which enhance the modern and fresh feel of the space. Two oversized bedrooms include a main bedroom with a new split-system air-conditioner and a built-in robe, providing plenty of space for relaxation. The neat bathroom features a new vanity, a separate shower, and a bathtub, ideal for unwinding after a long day. A linen/storage cupboard...

Inspect:
Auction:

Saturday, 21st September 2024 1:30 - 2:00
21/09/2024 02:00 pm

Price:

Auction This Saturday - Guide \$600,000



Simar Gill

0410 312 242



Chris Kypreos

0432 354 445

15/11 Campbell Hill Road
Chester Hill



First Floor



Ground Floor



The floor plan is not to scale; measurements are indicative and in metres. Exterior elements are not in position. Plans should not be relied on. Interested parties should make and rely on their own enquiries. All other information provided has been collected from reliable sources but cannot be guaranteed for accuracy.

15/11 Campbell Hill Road
Chester Hill



First Floor



Ground Floor



The floor plan is not to scale; measurements are indicative and in metres. All features included in this 3D plan are for inspiration purposes only. This is not an exact replica of the property or the position of exterior elements. Plans should not be relied on. Interested parties should make and rely on their own enquiries.