



4 Gracemere Place Glen Alpine, NSW

5

1

3

2

Tri level home with golf course views

This remarkable tri-level home on a 828m2 block offers unparalleled views and luxurious living in one of the area's most sought-after locations. Boasting a blend of elegance and comfort, this home is designed to embrace its stunning surroundings with expansive views from nearly every room. Positioned along the Glen Alpine Golf Course, this home enjoys an enviable setting with uninterrupted views of rolling greens and the meticulously maintained fairways.

...

Outside, the property is beautifully landscaped front to back, with manicured gardens that create a lush, inviting setting. An above-ground spa overlooks the golf course, perfect for relaxation while enjoying direct access to the greens. Completing this incredible property is a double garage, adding convenience and secure parking. Glen Alpine is known as one of Macarthur premium suburbs and is located 2.2kms to Macarthur Square shopping centre, 2.0km to Macarthur Train Station and 3.3kms to both the private and public hospitals. A choice of both public and private schools are also located nearby. The northern beach suburbs of Wollongong are within 40km drive via Appin and access to the City is via the M5 and M7...

Inspect:

Saturday, 9th November 2024 10:00 - 10:30

Price:

Contact Agent



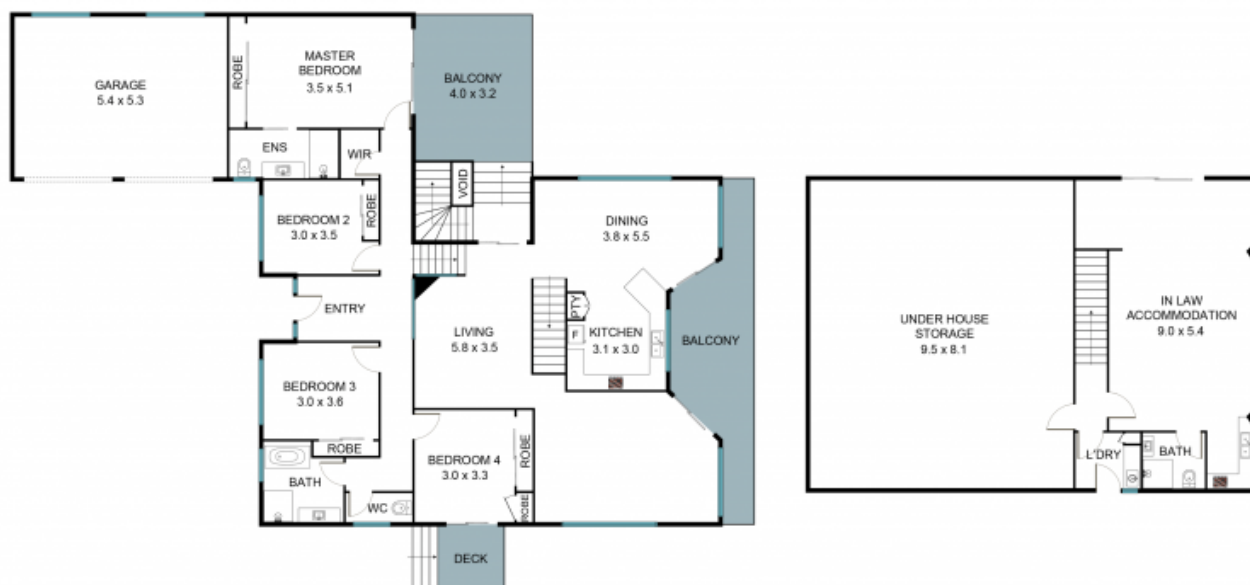
Gary Luke

0418 451 105



Kaitlin Hall

0404 529 516



4 Gracemere Pl, Glen Alpine NSW 2560



The floor plan is not to scale, measurements and in metres. Exterior elements are not in position.
Plans should not be relied on. Interested parties should make and rely on their own enquiries.
All other information provided has been collected from reliable sources but cannot be guaranteed for accuracy.