

220/132 Killeaton Street St Ives, NSW



## Luxurious 2-bedroom apartment in ideally convenient location

Enjoying an elevated north-facing position overlooking beautifully kept gardens, this whisper-quiet 2-bedroom apartment is well-appointed within the renowned 'Alcove' development. With spacious open-plan living, exquisite indoor-outdoor entertaining, and access to a pool, spa, and fully-equipped gym, you can easily walk to buses, St Ives Village, St Ives Park Public, St Ives High and Brigidine College.

- Elevated north-facing 2-bedroom apartment in stunning 'Alcove' development
- 2 bedrooms with mirrored BIRs, master with ensuite and balcony access
- 2 fully-tiled bathrooms with rain fall showers, ensuite with freestanding bath
- Gas kitchen, waterfall Caesarstone benches, large breakfast bar and pantry
- Incredible indoor-outdoor flow from open-plan living areas, sizeable study nook
- Expansive north-facing entertaining balcony, access to pool, spa and gym
- Internal laundry, linen press, ducted air conditioning, intercom, freshly painted
- Secure car space plus storage cage, manicured communal gardens with BBQ

**Inspect:**

Saturday, 21st September 2024 9:45 - 10:15

**Price:** For Sale - Contact Agent

**Council Rates:** \$344.00 p/q

**Water Rates:** \$172.79 p/q

**Strata Rates:** \$1,780.16 p/q



**Claudia Conroy**

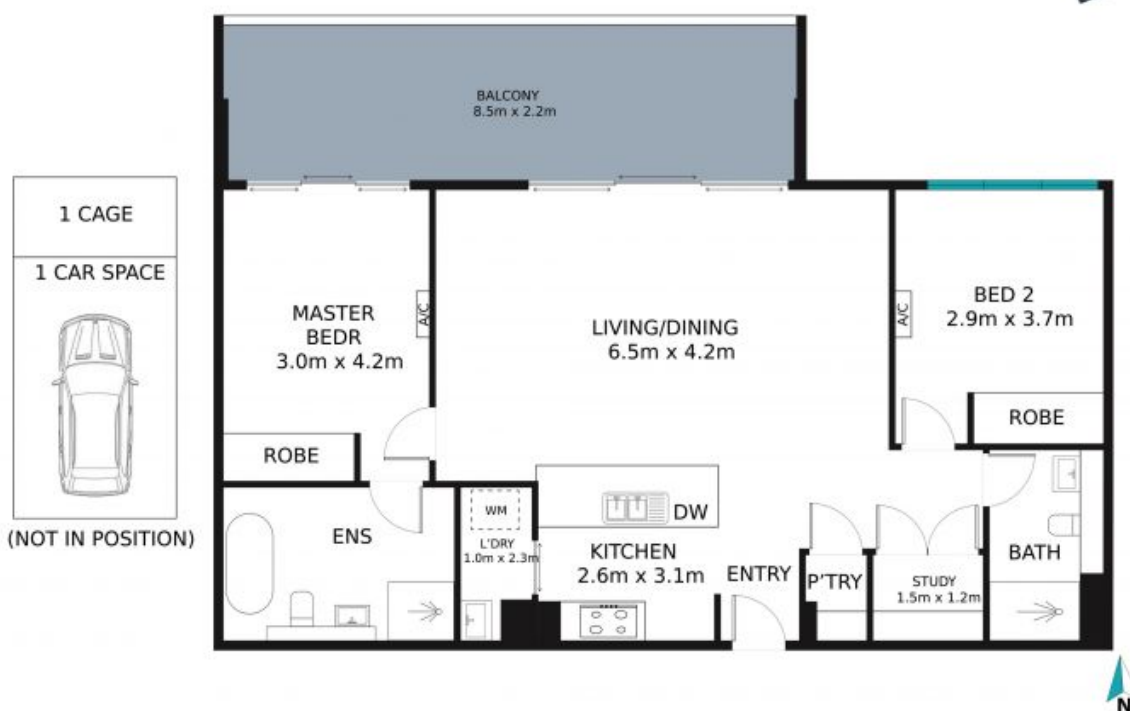
0429 338 412



**Max Ma**

0468 398 868

Unit 220/132 Killeaton Street,  
Street. Ives



The site plan and floor plan are not to scale; measurements are indicative and in meters. Bushes and trees are placed for illustration purposes. Plans should not be relied on. Interested parties should make and rely on their own enquire. All other information provided has been collected from reliable sources but cannot be guaranteed for accuracy.