

Actual View



1601/93 Pacific Highway North Sydney, NSW

3 3 2

Legendary Harbour Bridge views from whole floor penthouse

Encompassing the entire top floor of the La Maison building this is an opportunity to live your urban dream. Here, North Sydney lies waiting at your door with its finger on the pulse of business and leisure while providing easy transport just moments away. Luxuriously appointed bathrooms offer ensuites to all three bedrooms. Two secure car spaces deliver rare on-site accommodation for vehicles. This home and location will never fail to impress.

- Soaring urban sophistication across a huge single level open plan space
- Bathed in a harbour panorama with the Bridge, Luna Park and City skyline
- Sunlit living + dining, hardwood timber floors, contemporary loft vibe
- Entertainer's kitchen, gas cooktop, wide oven, dishwasher, island bar
- Exquisite use of chocolate toned stone to kitchen and bathrooms
- Three spacious bedrooms all configured with lavish ensuite bathrooms
- Home office, internal laundry room, built-in robes and storage
- Two secure on-site basement parking spaces, lift to door, reverse air con

Inspect: Wednesday, 18th September 2024 9:45 - 10:00

Price: \$1900 per week

Bond: \$8,400

Available Date: 24/08/2024



Natasha Amos

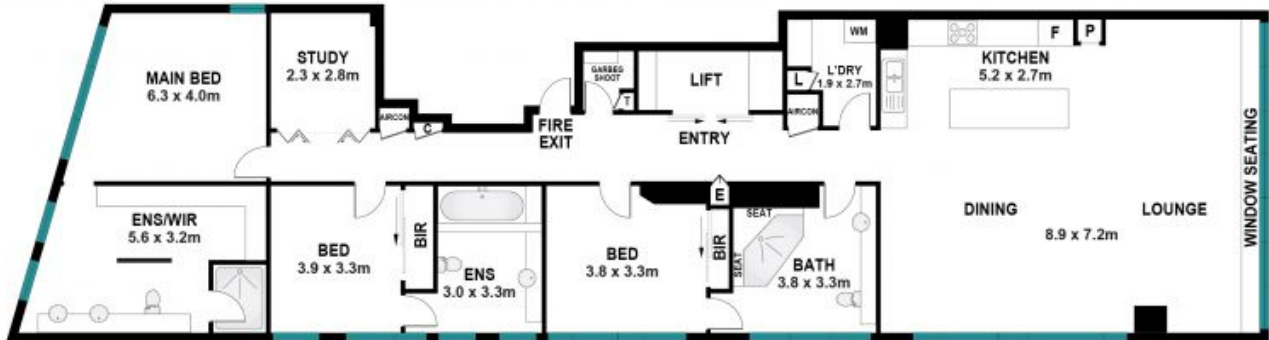
0415 755 587



Stephanie Ryan

0415 307 760

1601/93 Pacific Highway,
North Sydney



The site plan and floor plan are not to scale; measurements are indicative and in metres. Bushes and trees are placed for illustration purposes. Plans should not be relied on. Interested parties should make and rely on their own enquiries. All other information provided has been collected from reliable sources but cannot be guaranteed for accuracy.