



4 Sandpiper Crescent Boambee East, NSW



Elevated Family Home

Council rates: \$840pq approx.

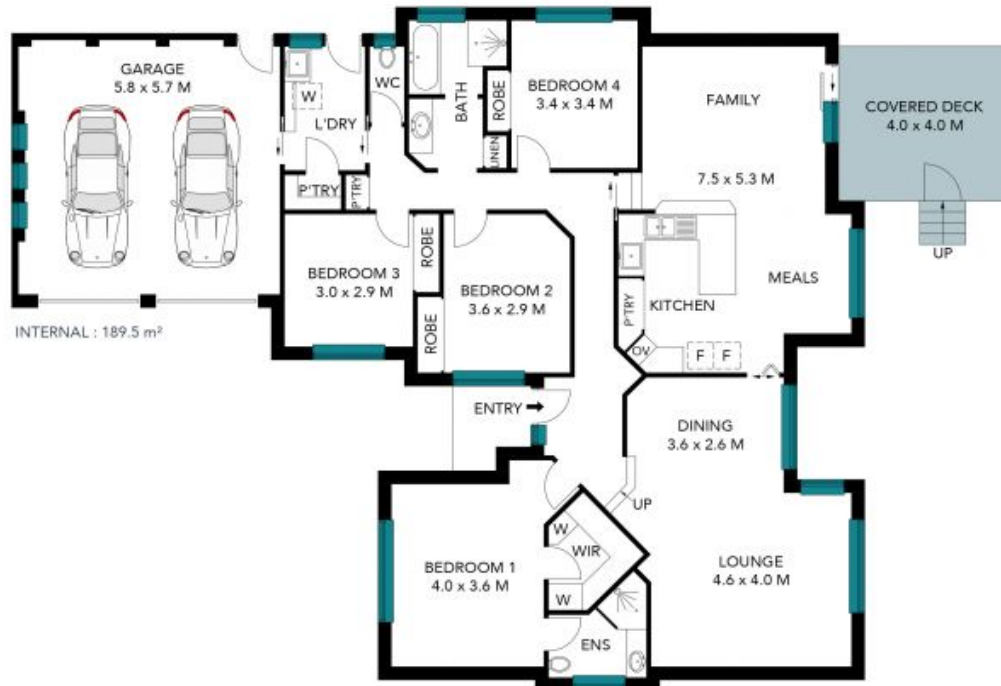
Price: \$899,000
Council Rates: \$840.00 p/q



Luke Wenban

0418 165 979

4 Sandpiper Cres,
Boambee East, NSW 2452



The site plan and floor plan are not to scale; measurements are indicative and in metres. Bushes and trees are placed for illustration purposes. Plans should not be relied on. Interested parties should make and rely on their own enquiries. All other information provided has been collected from reliable sources but cannot be guaranteed for accuracy.