



ZOOMED IN



22/11-15 Fairview Avenue The Entrance, NSW

3

2

2

Stunning Top-Floor Unit with Dual Balconies and Breathtaking Views

Discover coastal living at its finest with this beautifully maintained 3-bedroom, 2-bathroom top-floor unit at 22/11-15 Fairview Avenue, The Entrance. Located in a highly sought-after complex, this residence offers a rare combination of luxury, space, and convenience with lift included.

Key Features:

Dual Balconies with Unmatched Views:

Generous and Thoughtful Layout:

Exceptional Condition:

This unit has been meticulously cared for, ensuring that every corner is in excellent condition. The modern finishes and attention to detail throughout make this home move-in ready...

Inspect:

Saturday, 21st September 2024 10:00 - 10:30

Price: \$1,200,000 - \$1,300,000

Council Rates: \$1,179.00/year (approx)

Water Rates: \$384.00 p/q

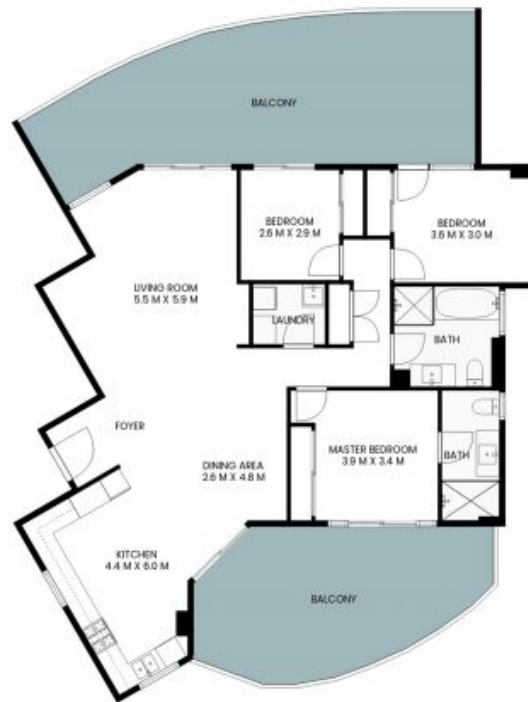
Strata Rates: \$2,145.00 p/q



Tony Trinder

0437 787 221

22/11-15 Fairview Avenue
THE ENTRANCE



INTERNAL: 119sqm
EXTERNAL: 91sqm

PLEASE NOTE: These Floorplan + Site Plans have been generated for marketing purposes and are to be used as a guide only.
While all care is taken, no guarantee can be given in respect of accuracy; sizes and dimensions are approximate, actual may vary.

