

34A Portview Road Greenwich, NSW

3 2 1

### Stylish, Old Style Renovated Apartment

Renovated top floor apartment in a block of 2, perfectly positioned on the high side of the street. Ideal for professional couples, small families or singles alike. Enjoy all the Lower North Shore has to offer - walk to Royal North Shore Hospital or St Leonards train, minutes drive to Crows Nest cafe society or North Shore business centers or be in the CBD in under 15 minutes

- This light and bright character-filled home offers:-
- 3 spacious bedrooms all with built-in robes
- 2 Stylish, Modern bathrooms
- Plantation shutters
- Modern, open-plan eat-in kitchen with gas cooking
- Lounge with gas fireplace Plus many beautiful original features
- Internal Laundry
- Lock Up Garage (shared)
- Walk to either St Leonards or Wollstonecraft train stations
- Walk to RNS and city buses
- Pets Considered Upon Application

**Inspect:** Wednesday, 18th September 2024 12:00 - 12:15

**Price:** \$900per week  
**Bond:** \$3,600  
**Available Date:** 14/09/2024



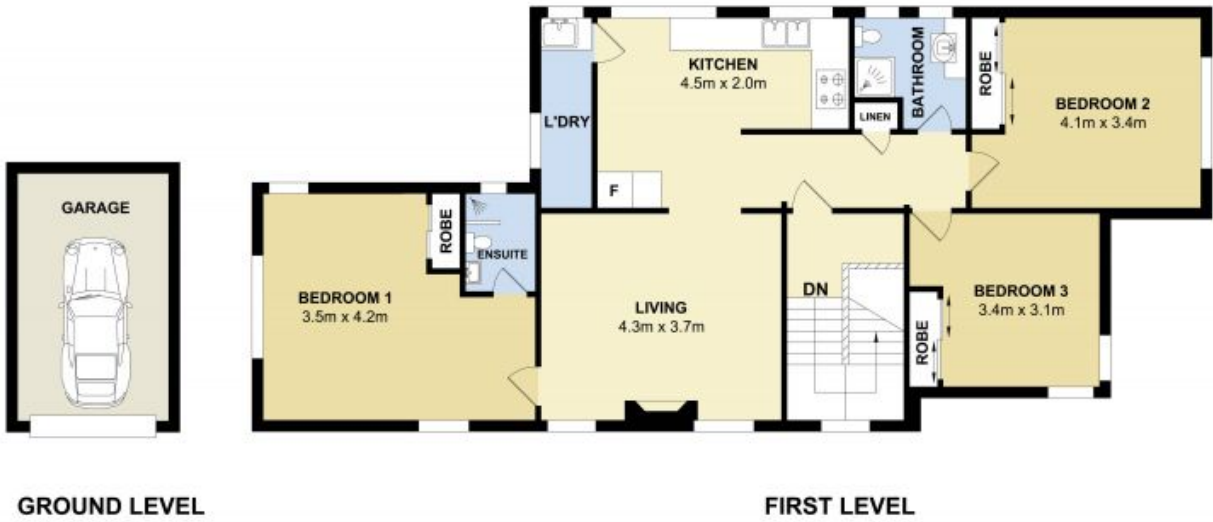
**Jaydn Frintzilas**

0468 998 294



**William Pendrick**

0434 808 385



### 34A Portview Road, Greenwich

Measurements are approximate. Not to scale. Illustrative purposes only.  
 Open2view does not take any responsibility for any information supplied.

