

26/480 Military Road Mosman, NSW



North facing garden oasis

Expressions of Interest closing Tuesday 1st October 2024 at 5pm.

Stylishly presented, immaculate and wonderful privacy, this residence is positioned at the rear and offers the perfect lifestyle of relaxation.

Off street parking available, to be secured upon request via body corporate.

The spacious open design seamlessly merges onto a private terrace and lush gardens, while meticulously renovated finishes create superb contemporary functionality.

Offering complete seclusion and serenity, yet minutes to a wide variety of cosmopolitan cafes, restaurants and boutiques. You're a leisurely stroll between Mosman and Cremorne and bus transport is metres away.

- Tightly held complex embraced by manicured gardens

Inspect: Wednesday, 18th September 2024 12:00 - 12:30

Price: Contact Marize Bellomo



Marize Bellomo

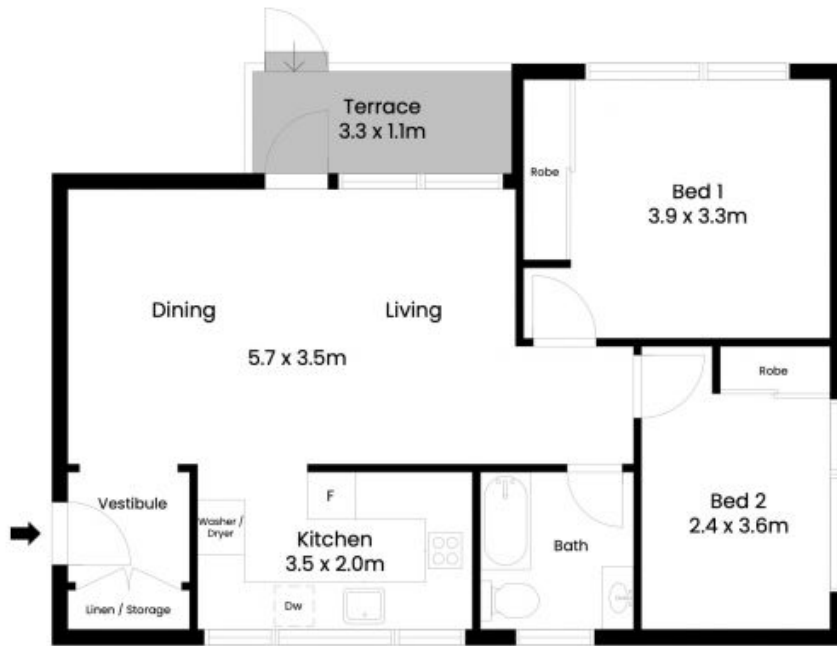
0414 972 203



Alanna Tohme

0450 862 088

26/480 Military Road
Mosman



The site plan and floor plan are not to scale; measurements are indicative and in metres. Bushes and trees are placed for illustration purposes. Plans should not be relied on. Interested parties should make and rely on their own enquiries. All other information provided has been collected from reliable sources but cannot be guaranteed for accuracy.