



56 Wildflower Crescent Calderwood, NSW



Single-level family entertainer

A fresh near-new build, complete with all the latest innovations in family-friendly living, this impressive residence pairs a luxury and laidback regional lifestyle. Set in an emerging suburb surrounded by new homes, with local amenities in close reach, it provides an exceptional opportunity for your discerning household.

- Spacious, stylish and impeccably presented property constructed in 2020
- Lounge + separate dining and media room, easy-care tiled flooring, ducted A/C
- Rear flow to undercover alfresco, backyard and spa, escarpment views
- Stone kitchen boasting a breakfast island, butler's pantry and pendant lighting
- Master bedroom with ensuite and walk-in wardrobe; abundant storage throughout
- Full family bath, gas heating point, alarm, double garage with internal access
- Minutes to parks, cafes, pub, freeway link, and Calderwood Christian School
- Approx. 15 min commute to Shellharbour and 20 min to Wollongong CBD

The below rates are provided as a guide:
Council rates \$590.67pq approx.
Water rates \$172.79pq approx.

Price:

Price Guide \$985,000



Jamie Pereira

0447 379 080

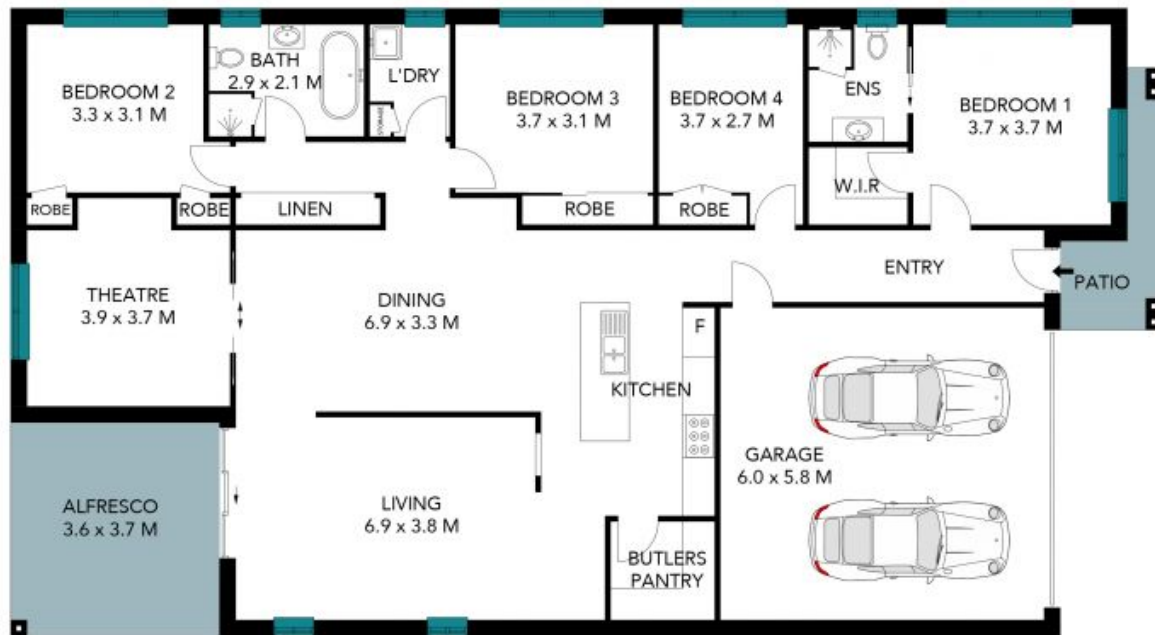


Darnell Haselau

0426 400 240

56 Wildflower Crescent
Calderwood

STONE



The site plan and floor plan are not to scale; measurements are indicative and in metres. Bushes and trees are placed for illustration purposes. Plans should not be relied on. Interested parties should make and rely on their own enquiries. All other information provided has been collected from reliable sources but cannot be guaranteed for accuracy.