



37 Redford Crescent McDowall, QLD

4

2

2

Immaculate Lowset Home

Located in the sought after Glendora Estate of McDowall, investors, downsizers or first home buyers look no further, this lowset gem is ready & waiting for you. This single level family home is in a quiet & peaceful street, yet only less than 1 minute from parkland & just 10 minutes from Westfield Chermside. If lifestyle, location & convenience is what your after here it is!!

- Private Level 636sqm block with amazing outdoor living
- Ducted 4 zoned Air conditioning throughout
- Multiple living areas to suit the whole family
- Security screens & alarm system
- Private outdoor entertaining area
- New carpets throughout
- Private built in spa bath
- McDowall State School catchment

Price:

Offers Over \$1,249,000



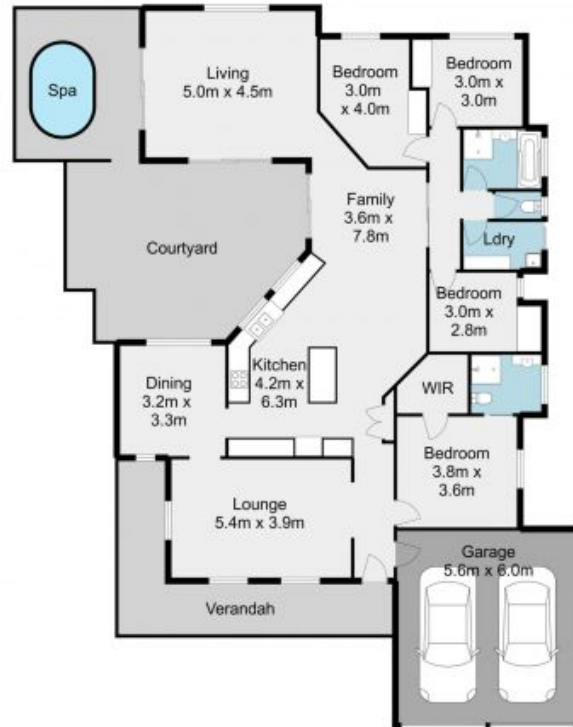
John Bradley

0410 454 718



Matthew Biggs

0499 498 988



The site plan and floorplan are not to scale; measurements are indicative and in metres. Bushes and trees are placed for illustration purposes. Plans should not be relied on. Interested parties should make and rely on their own enquiries.

37 Redford Crescent, McDowall

stonespley.com.au